

CSU The California State University

California Starts Here

GIFTS THAT INSPIRE, BUILD AND TRANSFORM

2016-2017
DONOR SUPPORT





Overview	2
Charitable Giving	4
Student Scholarships	6
CSU Cares	16
Academic Enrichment	18
Directed Research	26
Public Benefit	28
Student Athletics	32
University Support	36
Trustees' Award	40
Wang Award	42
In Memoriam	44
Appendix	46
Definition of Terms	56



Dear Friends —

It is once again my great pleasure to share our philanthropic successes over this past year and offer my deepest thanks for your steadfast support of our mission, vision and values.

This year's report — as in years past — highlights the many incredible gifts that generous supporters like you continue to provide to the California State University and its students, faculty, staff and alumni.

As I visit our campuses and meet with a myriad of leaders and stakeholders, I'm often reminded that the CSU community will play an increasingly vital role in the future success of the Golden State.

In recent years, the CSU community made breakthroughs in gravitational waves, discovered new technologies to bring electricity to remote villages, developed techniques to overcome historic droughts and rescued capsized refugees in the Mediterranean Sea.

The CSU community advanced the fields of palliative care and child development, stood up for the most vulnerable students in our communities and fought to ensure the human rights of all.

Indeed, these discoveries, innovations, advancements and breakthroughs by our students, faculty, staff and alumni represent the best of California today and in the future.

And it all starts with your generosity, leadership and support.

The gifts highlighted in this year's report inspire future generations of students, foster faculty and staff excellence and create new opportunities in research, public service, the arts and athletics.

These gifts have enriched STEM education, enhanced teacher preparation, and provided unmatched educational opportunities and support for students from historically underserved communities.

These gifts have paid tribute to our student veterans, honored the legacies of university and community trailblazers, and helped unearth and record the oral history of an entire region.

These gifts — and supporters like you — are helping to transform the CSU to meet the ever-evolving needs of the people of California.

Because of supporters like you, California starts here.

For California,

Timothy P. White, Chancellor

OVERVIEW



Overview

What a transformational, record-breaking year for the California State University.

2016-2017 saw a record-breaking \$501 million in new gift commitments. The CSU also achieved more than 30 percent increases in both alumni and parent giving, with an additional 6,800 CSU alumni making gifts compared to the prior year.

Many CSU campuses also broke individual and university records.

A CSU-record \$110 million commitment was made to Cal Poly San Luis Obispo. San Diego State concluded its record-breaking Campaign for SDSU, which in total raised \$815 million over its lifetime.

At Chico State, a record number of gift commitments to the Tower Society spurred new scholarships. The Campaign for CSUSB made massive strides toward its historic fundraising goal.

What is most impressive – beyond the records themselves – is the incredible transformative power and impact of these gifts to CSU students, faculty, staff and alumni.

The CSU made substantial progress toward Graduation Initiative 2025, stood in support of Dreamer, LGBTQ, first-generation and veteran students, worked to end food and housing insecurity among students, and declared that it is still in the global fight against climate change.

These achievements – and many others – are a result of the forward thinking and impactful generosity of our donors, champions, stakeholders and friends.

Indeed, we are forever grateful and appreciative.

This year, we broke records, inspired generations, built great things and transformed the California State University.

Next year, we're going to expand on our success and set a new course for California's future.

Gifts Received

In 2016-2017, the CSU received over \$200 million in support – 98 percent of which was donor designated – to fund current operations and programs, including:

- \$30.5 million for student scholarships
- \$57.5 million for academic enrichment
- \$8.2 million for applied research
- \$1.7 million for faculty support
- \$3.1 million for library resources
- \$21.4 million for athletics
- \$42.1 million for public service programs
- \$2.8 million for equipment and minor facility improvements
- \$35 million for other designated priorities

Unrestricted support of \$7.3 million represents two percent of all gifts received and is available for high priority needs.

For long-term capital projects, campuses received \$29 million for major facility construction and renovation. This is a 24 percent increase over the prior year.

Endowments grew by \$88 million in new contributions which will provide support in perpetuity. About half of endowment gifts are designated to scholarships and half are designated to academic programs.



CHARITABLE GIVING

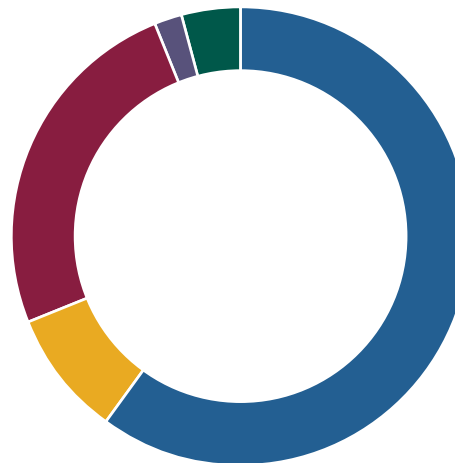


Charitable Gifts by Source



Other Individuals	27%
Alumni	24%
Parents	2%
Foundations	23%
Corporations	15%
Other Organizations	9%

Charitable Gifts by Purpose



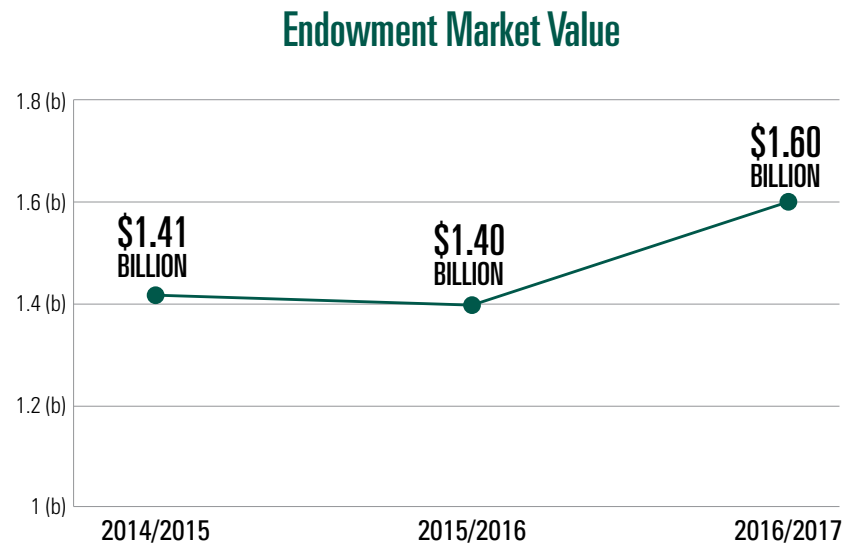
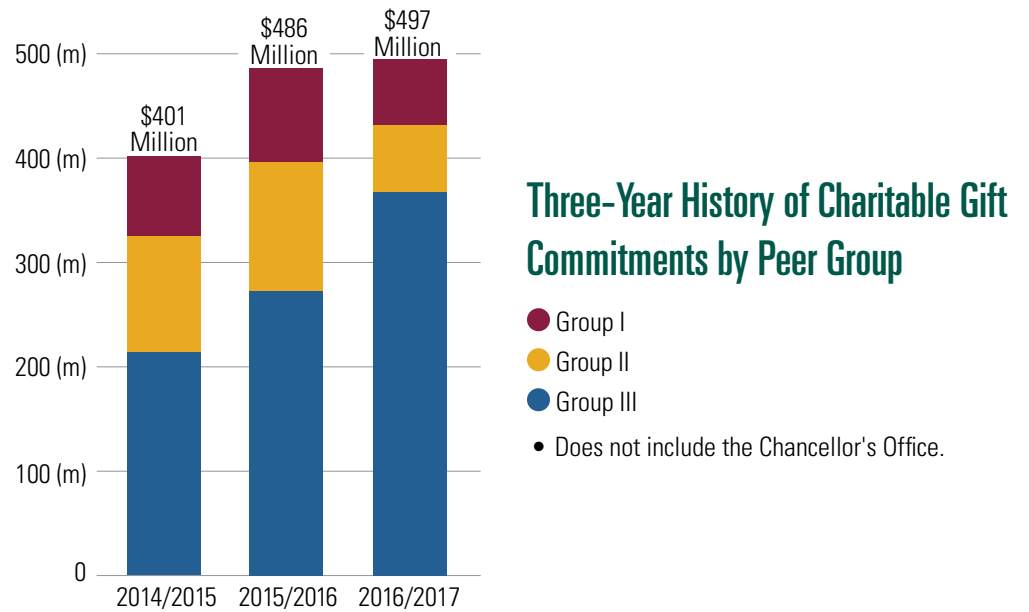
Current Programs	60%
Campus Improvements	9%
Endowment	25%
Unrestricted	2%
Other	4%

**\$501
MILLION**
GIFT COMMITMENTS

**\$339
MILLION**
GIFT RECEIPTS

**\$53
MILLION**
IN SCHOLARSHIPS
AWARDED

**11.57
PERCENT**
ENDOWMENT
INVESTMENT RETURN



STUDENT SCHOLARSHIPS



This year, donor support for student scholarships helped thousands of CSU students attend college, reach their academic goals and build a better future for themselves, their families and California.

These stories highlight our shared commitment and focus on ensuring that all CSU students and alumni – regardless of background or status – have the opportunity to achieve, graduate and inspire others.

Endowed Gift to Lowell Diller Wildlife Scholarship Builds on Biologist's Legacy

A \$50,000 gift to Humboldt State from Green Diamond Resource Company and the Diller Family helped permanently endow the *Lowell Diller Wildlife Scholarship Endowment*, in honor of wildlife biologist and HSU professor Lowell Diller, who passed away in March 2017.

Diller, who began teaching at Humboldt State in 2001, is perhaps best known for developing the first Habitat Conservation Plan for the threatened northern spotted owl, which helped protect elements of the forest critical to the owl's long-term survival. This plan – along with his love of biology and teaching – earned Diller the respect of fellow biologists, timber industry colleagues and educators in the North Coast.

Honoring an Urban Planning Trailblazer through Endowed Scholarship

Cal Poly Pomona received more than \$200,000 to create an endowed scholarship to memorialize Margarita McCoy, the first woman to chair a university department of urban planning in the United States. The scholarship will provide annual financial aid to students in the university's *Urban and Regional Planning* program.

During her fifteen years as professor and seven years as chair at Cal Poly Pomona, Ms. McCoy was committed to building a brand new, high-caliber program for first-generation students. Her advocacy and involvement with planning accreditation committees helped to increase the number of women planner graduates.

Lowell Diller Wildlife Scholarship

Long Beach Alumnus Gift Empowers Students with Disabilities

Cal State Long Beach alumnus Robert H. Murphy made a combined \$1.5 million commitment to establish the *Bob Murphy Access Center for Students with Disabilities* and the *Bob Murphy Access Endowed Fund*. Together, these gifts will provide specialized programs, facilities and services to empower students with disabilities at CSULB to achieve their full potential.

Cal Maritime Raises \$60,000 in Honolulu Scholarship Fundraiser for Hawaiian Keelhaulers

With the Training Ship *Golden Bear* serving as backdrop in Honolulu, Cal Maritime raised \$60,000 for the *Captain David Lyman Memorial Scholarship Endowment*, which supports Hawaiian students attending the university. The endowment was established in 2007 to honor Captain David Lyman, a 1965 Cal Maritime graduate and founder of the Hawaii Harbor Pilots Association. Lyman passed away in January 2006 during a pilot assignment on the island of Kauai.

In addition to this year's fundraiser, the *Lyman Scholarship* has received regular contributions over the last ten years to help grow the endowment and make a unique Cal Maritime education more affordable for students from Hawaii.

Local Leaders Contribute \$2.2 Million for Sonoma State EOP Students

A consortium of local community and business leaders contributed \$2.2 million to Sonoma State's *Educational Opportunity Program*. The combined gifts from the Kalmanovitz Charitable Foundation, the Federated Indians of Graton Rancheria, Rodney Strong Vineyards and Cooperages 1912 will fund support programs and scholarships for hundreds of economically disadvantaged, first-generation students enrolling at Sonoma State.



CSULB students test out adaptive tricycles



Training Ship Golden Bear at port in Honolulu, Hawaii

**“I want Dreamers to know
that no matter how hard
it may seem, their dreams
are important.”**

– Omar Velasco, CSUN





Top-Rated LA Radio Host Starts Dreamers Scholarship at CSUN

Alumnus Omar Velasco established the *Omar Velasco Dreamers Scholarship* which provides two annual scholarship awards for first-year Dreamer students at Cal State Northridge.

Velasco's father came to the United States as part of the Bracero Program in the 1950s. Now a U.S. citizen, Velasco was born in Jalisco, Mexico and came to this country as a teenager, enrolling in San Fernando High School and graduating from CSUN in 2000. Today, along with his wife, Argelia, Omar hosts the top-rated morning radio show in Los Angeles, *Omar y Argelia*, on K-LOVE 107.5 FM.

Inspired by gifts from Omar Velasco and many others, the community has come together to help more than 8,300 Dreamers enrolled in the university achieve the American dream of attending college, earning a degree, giving back to their communities and building lifelong success.

Endowed Scholarship a Thank You to Long Beach Community

Funded through a \$2.2 million bequest, the *Dorothy and Chet Lynd Endowed Scholarship*—named in honor of the donors—helps deserving Cal State Long Beach students earn their college degree. In establishing their scholarship, Dorothy and Chet Lynd saw their bequest as a way of giving back to the Long Beach community, where they spent many happy years as a married couple.

Judy and Conrad Schmitt Scholarship in Nursing Provides Support to Single Parent Students

San José State received a \$1.25 million gift from alumnus Dr. Conrad Schmitt to establish the *Judy and Conrad Schmitt Scholarship in Nursing*. Dr. Schmitt's gift, made in memory of his late wife and fellow alumna, Judy, will provide scholarships to students who are single parents enrolled in SJSU's Valley Foundation School of Nursing.

Edwards Estate Provides Scholarships, Support for Foster Youth

Mark and Lori Edwards made an estate gift of \$2.2 million to Cal State San Bernardino to provide scholarships and program support for foster youth. The Edwards family has been generous supporters of CSUSB for a decade, donating funds, gifts-in-kind and cultural experiences for more than sixty *Renaissance Scholars*.

Five Channel Islands Students Earn Scholarships from Business & Technology Partnership

Five Cal State Channel Islands students received scholarships at the *2017 Business & Technology Partnership Leadership Dinner*. The five students – who each received a \$6,500 scholarship – are all majoring in either business or the sciences and were chosen based on financial need and academic achievement.

Housed in the Martin V. Smith School of Business and Economics, the Business & Technology Partnership serves as a fundraising affiliate of the CI Foundation. Its membership is comprised largely of community leaders, business executives and professionals.

Estate Gift Provides Scholarships for LGBTQ Students at Sonoma State

A \$500,000 estate gift to Sonoma State will endow the *Steve Carroll and Chuck Maisell Scholarship Fund*. This incredible gift will provide scholarships for undergraduate students with financial need who are members of the *Queer Straight Alliance* at Sonoma State.

Steve Carroll and Chuck Maisell served as members of the Ambassadors for Higher Education, which plays a leading role in promoting higher education issues on behalf of Sonoma State and the CSU.

President Junn Kicks Off Tenure at Stanislaus State with First Generation Scholars Gift

President Ellen Junn kicked off her tenure at Stanislaus State with a \$50,000 lead gift to support the *First Generation Presidential Scholars Initiative*, which benefits Central Valley students. The president of the university's foundation board and Stan State alumnus, John Jacinto, matched the lead gift with an additional \$50,000 contribution.

The *First Generation Presidential Scholars Initiative* recognizes the outstanding achievements and contributions of high school and community college students who reside near the university and are the first in their families to receive a university education.

Local Donors Inspire Gifts to Help Pioneers Excel

Cal State East Bay's *Helping Our Pioneers Excel* (HOPE) program received several gifts to support its holistic efforts to combat food insecurity amongst students. After viewing a local news segment on HOPE, Lytton Rancheria was inspired to give \$100,000 toward the program, while current Cal State East Bay Educational Foundation trustee member Allan Warren made a \$50,000 commitment.





Born in Mexico, CSUN Alumnus and U.S. Marine Inspired to Pay it Forward

Cal State Northridge alumnus Gabriel Chavez remembers exactly what inspired him to establish the *Sergeant Gabriel Chavez Scholarship Fund*, awarded annually for five years to a deserving CSUN student veteran.

"My mom told me, 'Whatever you give, you get twice in return,'" Gabriel said. "And it's always stuck with me."

Born in Mexico to very modest means, Gabriel and his family eventually moved to California where his parents, Luis and Olivia, worked picking fruits and vegetables. After time in the U.S. Marine Corps, Gabriel attended Los Angeles Mission College, where counselors pointed him in the direction of Cal State Northridge and a degree in radiologic sciences.

Gabriel was all-in at CSUN. In addition to excelling in his radiologic sciences program, Gabriel received the Mike Mahoney Marine Corps Veterans Scholarship, Outstanding Veteran Award, and got involved in the Radiologic Sciences Alumni Chapter. Those connections led Gabriel to a career with the Los Angeles County Department of Public Health.

Despite earning a modest living that requires him to save every penny to fund the scholarship, Gabriel knows inherently the sacrifice of others to help him reach his goals. Through the *Sergeant Gabriel Chavez Scholarship Fund*, Gabriel hopes to pay it forward, help a student with a similar story to his own and inspire others to give back.

Cal State LA raised more than \$17.2 million in gifts received this year, setting a record for the highest total in the university's 70 year history.

"I tell the students, don't worry about the money. We can take care of it. Don't let the money scare you away from college."

— Captain James Morgan, Cal Maritime



Cal Maritime

Started by Alumni, Banning Scholarship Supports First-Gen Cal Maritime Students

Cal Maritime marked ten years of scholarship support for graduates of Phineas Banning High School, located near the Port of Los Angeles. Since 2007, the *Banning Scholarship* program has distributed \$250,000 to Banning High graduates bound for Cal Maritime, many of whom are the first in their family to attend college.

The *Banning Scholarship*, started by Cal Maritime alumnus Captain James Morgan and members of his alumni class, ensures that Banning High students interested in a career in the maritime industry can attend the university without having to worry about potential burdens placed on them and their families.

The scholarship's unique scope and cohort size also allows for Morgan and his colleagues, many of whom are now captains, admirals and leaders in the maritime industry, to provide individualized support, mentorship and counseling to student recipients.

Read more about the Banning Scholarship and its transformational impact on Cal Maritime students at calstate.edu/profiles/Mayra.

Channel Islands Nursing Students Gain Support from Grossman Foundation Scholarship

Cal State Channel Islands received a \$100,000 donation from the Dr. Richard Grossman Community Foundation to establish the *Dr. Richard Grossman Endowed Nursing Scholarship*. The gift – inspired to posthumously honor both Dr. Grossman and Grossman Foundation member Lon Morton – will support CSUCI nursing scholars in financial need beginning in the 2018-2019 academic year.

Planned Gift Memorializes Dominguez Hills Alumna, Supports Students in Need

Dr. Tsuyoshi Roy Nakai made a \$350,000 planned gift to support scholarships in the Communications Department at Cal State Dominguez Hills. After his daughter Leslie, a CSUDH alumna, passed away in 2000, Dr. Nakai established the *Leslie Akemi Nakai Memorial Fund* to celebrate her life and provide financial assistance to students in need.

Since 2000, Dr. Nakai has donated over \$70,000, which has funded over 65 annual scholarships. This new planned gift will further support students while reducing the financial burden on them and their families.

Dhont Gift Funds Scholarships for College-Bound Foster Youth

Dedicated to furthering student success, the Dhont Family Foundation has donated more than \$1 million to Cal State Fullerton and its *Guardian Scholars Program* over the last decade to fund student scholarships. The *Guardian Scholars Program* provides current and former foster youth with a full-ride scholarship, as well as comprehensive, year-round programming that promotes their academic, career and life ambitions.



Cal Maritime student and Banning Scholarship recipient Mayra Corrales with peers

OC Community Foundation Grant Offers Support to CSUF Student Veterans

A \$75,000 grant award from the Orange County Community Foundation (OCCF) has enabled Cal State Fullerton's *Veterans Resource Center* to offer critical emergency financial support to the more than 500 student veterans attending the university. Through this grant award, CSUF student veterans now have access to scholarship support, an internship stipend and an emergency assistance fund that provides timely financial relief for students experiencing economic hardship.

As recipients of this grant, the *CSUF Veterans Resource Center* is also a part of OCCF's Orange County Veterans Initiative, a collaboration between businesses, non-profits and community organizations. Through this investment, the OCCF is helping to support the academic, career and life ambitions of Titan student veterans.

Two Cal Poly Pomona Students Create Emerging Scholars Fund

Through a campus fundraising effort with graduating seniors and other students, Cal Poly Pomona undergraduates Marwa Mhtar and Su Yeon Kim created the *Emerging Scholars Fund*, a scholarship for first-generation students from low-income backgrounds. Raising more than \$20,000 to date, the two were motivated by the scholarship support they themselves received to pay it forward.

Green & Gold Gala Supports Student Scholarships and Emergency Grant Fund

The Green & Gold Gala, Sacramento State's signature black-tie fundraising event, raised more than \$373,000 in March 2017 to support student scholarships and programs, namely the *Green and Gold Scholarship* and *Student Emergency Grant Fund*.

The *Green and Gold Scholarship* was created to assist undergraduate students of any major who have demonstrated enthusiasm and determination to obtain a degree despite personal, financial, or other hardships. The *Student Emergency Grant Fund* assists students who experience a financial emergency that could jeopardize their studies at Sacramento State.

Fresno State Alumnus, Hmong-American Veteran Makes History with Endowed Gift

History was made when Soul Vang, the first Hmong-American to earn a Master of Fine Arts degree from Fresno State, created a \$30,000 endowment to support a scholarship and annual poetry prize. Vang, a U.S. Army veteran who served in Germany and Texas, also made history by being the first Master of Fine Arts graduate from Fresno State to create an endowed scholarship.



Edison International donated \$100,000 to Cal State Dominguez Hills to support STEM scholarships in the College of Natural and Behavioral Sciences and training for the first mobile fabrication laboratories in the Los Angeles region.



CSU CARES



The CSU is leading the national discussion on basic needs and holistic wellness in higher education – issues that affect an alarming number of students in the CSU and elsewhere. As we continue to study these issues in depth and develop best practices, we’re also committed to matching words with actions.

Due to the incredible generosity of our donors and partners, CSU campuses have been able to greatly expand the size and scope of their efforts to establish food pantries, ensure support for foster youth and provide emergency assistance for our most vulnerable students.

Treviño Family Pledges Support to Fresno State’s March Match Up Campaign

Michael Treviño, whose Bay Area family was inspired by his aunt Ermelinda Treviño to establish an endowment to help Fresno State students facing food insecurity, pledged \$32,000 in matching funds to the *March Match Up* campaign supporting the university’s *Student Cupboard*.

The campaign – a community-wide fundraising drive to battle student hunger issues at Fresno State – was launched in March 2017 with an announcement from Kaiser Permanente Northern California Community Benefits Programs and accounting firm Moss Adams LLP. The two community partners promised to match dollar-for-dollar all monetary gifts to the *Student Cupboard* up to \$50,000.

With the additional commitment from the Treviño Family, the total amount of matching funds to support the free food and hygiene cupboard for Fresno State students climbed to \$82,000 in 2016-2017. With matching gifts, *March Match Up* has the opportunity to generate more than \$164,000 for the *Student Cupboard* when the goal is met.

Chico State Community Unites to End Food and Housing Insecurity

The *Campaign for Chico State* has united the support of faculty, staff and the Student Philanthropy Council to fight food and housing insecurity. Chico State's faculty association established an endowment to support the new *Basic Needs Project* and the university aims to raise \$50,000 in annual funds by Giving Day on November 28, 2017. Faculty and staff are now being recognized through their own giving program that provides special recognition for their commitment to Chico State.

Obershaw Endowed Gift Supports Campus Food Pantry, Foster Youth at CSUSB

Longtime friends of Cal State San Bernardino, Chuck and Shelby Obershaw, provided a \$1 million endowed gift – the *Charles and Shelby Obershaw Endowment for Student Success* – to support students experiencing food and housing insecurities as well as emancipated foster youth.

In honor of the Obershaw's gift, CSUSB renovated and named the *Obershaw DEN Food Pantry* in recognition of their forward-thinking gift to increase the university's capacity to serve more needy students with healthy food options.

Stanislaus State Faculty Contribute \$35,000 to Address Students' Basic Needs

The Stanislaus State chapter of the California Faculty Association contributed \$35,000 to its *Campus Cares Fund*. The donation includes \$10,000 earmarked for ongoing operating expenses of the *Student Emergency Fund* and the *Campus Food Pantry* and \$25,000 to establish an endowment to provide continuing support of the fund.

Stanislaus State's *Student Emergency Fund* provides immediate financial assistance to Stanislaus State students who encounter temporary financial hardships due to an emergency situation, crisis or catastrophic event. The *Campus Food Pantry* provides no-cost access to food and basic personal supplies for students.

Davis Family Gift Establishes Overnight Orientation for New Titans

Through a generous gift from Theresa and Richard K. Davis, alumnus and executive chairman of U.S. Bancorp, Cal State Fullerton established *Overnight Orientation*, a pilot program which enhances the onboarding process for the university's most vulnerable students.

Incoming CSUF students attending *Overnight Orientation* receive additional resources that support academic and career exploration. The program also provides students with a greater sense of pride and belonging to the Titan community.

Sunsweet Growers Supplies Quarterly Donations to Sac State Food Pantry

Yuba City-based agricultural co-op Sunsweet Growers, Inc. committed quarterly food donations to the *ASI Food Pantry* at Sacramento State. Operated by student leaders, the *ASI Food Pantry* received the support of Sunsweet Growers to ensure their shelves were stocked throughout the year, thanks to the work of Sac State alumna Anna Klein.



ACADEMIC ENRICHMENT



New Toyota Center for Innovation in STEM Education

California's leaders – in entertainment and the arts, technology, agriculture, healthcare, aerospace and more – seek out our diverse alumni because they know that a CSU education is a quality, inclusive and hands-on experience.

From the classroom to the laboratory and from the studio to the surrounding community, donor support continues to enrich our academic mission, providing students with uniquely-CSU opportunities to discover, build and transform their career and life trajectories.

Dominguez Hills Receives Largest-Ever Gift from Toyota Foundation for STEM

Cal State Dominguez Hills received the single largest donation in university history with a \$4 million gift from the Toyota Foundation for its new *Science and Innovation Building*.

In recognition of the automaker's gift, the Center for the Innovation in STEM Education on the first floor of the new building will be named the *Toyota Center for the Innovation in STEM Education*. This record-breaking gift now brings Toyota's total commitment to Cal State Dominguez and STEM education to approximately \$5 million over the last two fiscal years.

Patricia A. Chin School of Nursing Set to Strengthen Future Generations of Healthcare Leaders

Alumna and emerita professor Dr. Patricia Chin, along with her husband Dr. William Chin and their family, made a transformative gift to Cal State LA's school of nursing, which will be named the *Patricia A. Chin School of Nursing*. As innovative leaders in the healthcare industry and longtime champions of Cal State LA, the Chin Family will also endow the *Chin Family Institute of Nursing* and support the renovation of the Simulation Lab in the Chin School of Nursing to further strengthen future generations of healthcare professionals.



Patricia A. Chin School of Nursing

Longtime CSULB Supporter Names Language Center in Honor of Professor

Longtime supporter Mario Giannini donated \$1.1 million to Cal State Long Beach to establish the *Clorinda Donato Center for Global Romance Languages and Translation Studies*. Named in honor of Clorinda Donato, professor of French and Italian and the George L. Graziadio Chair of Italian Studies at CSULB, the newly-named center is the first in the country dedicated to the research and development of Romance languages and the first in the CSU dedicated to translation studies.

Forward-Thinking Gifts Build New Opportunities for Chico State Business and Agriculture Students

Chico State received more than \$2.6 million in support of two new capital projects – a new building for the College of Business and a new agriculture complex that will house an educational center, farm store and creamery. Investments continued with lab renovations in the *College of Engineering, Computer Science and Construction Management* to provide state-of-the-art equipment, safety upgrades and new workspaces for students.

Cal State Fullerton's de Graaf Center Honors Founding Professor's Lifelong Contributions

The Center for Oral and Public History at Cal State Fullerton, which focuses on recording Orange County's history, was renamed to honor professor emeritus Lawrence B. de Graaf, a founding faculty member who helped create Cal State Fullerton's first archive and the Oral History Program.

Over the years, Dr. de Graaf and his late wife, Shirley, have made gifts and pledges to Cal State Fullerton totaling \$1 million. Dr. de Graaf was recognized in 2017 by the CSU Board of Trustees for his legacy of academic and research excellence and lifelong dedication to Cal State Fullerton students and alumni.



Students put newly-renovated ECC labs to use at Chico State



“We are committed to giving back to our community. And what better way to build a future than by investing in our young people and their education.”

– Kim Ruiz Beck, Fresno State



Fresno State



Bookstein Hall at Cal State Northridge

Bookstein Gift to CSUN Establishes Three Endowments

Accounting industry leader and alumnus Harvey Bookstein and his wife, Harriet, made a \$5 million gift to Cal State Northridge to establish three endowments in the *Department of Accounting and Information Systems*, the *Real Estate* program and for strategic initiatives within the *David Nazarian College of Business and Economics*. The gift will also support CSUN's *Volunteer Income Tax Assistance* program, which provides free tax preparation assistance to low-income families and individuals in the Los Angeles region.

Ruiz Foods Creates State-of-the-Art Learning Environment for Fresno State Business Students

A modern space for innovation is essential for business students. Ruiz Foods, a local food manufacturing company, made a \$1 million gift to Fresno State to expand the *University Business Center* at the Craig School of Business. The gift will also create the *Ruiz Foods Executive Classrooms*, a state-of-the-art learning environment for over 3,300 Craig School of Business students, which will elevate the academic experience and open new possibilities for innovative teaching.

The Ruiz Family has a long history of generously supporting Fresno State. Fred Ruiz founded the Institute of Family Business, a community resource that promotes family businesses as a catalyst for economic growth. Kim Ruiz Beck, chairman of Ruiz Foods and Fresno State alumna, serves on the CSU Fresno Foundation Board of Governors.



Nazarian Family Gives Transformational Gift to Support Performing Arts

Cal State Northridge received a transformational \$17 million gift from Younes and Soraya Nazarian to support the university's performing arts and arts education programs, as well as its renowned Valley Performing Arts Center, which was renamed as *The Younes & Soraya Nazarian Center for the Performing Arts*.

Amidst political unrest in their native Iran, Younes and Soraya immigrated with their family to Los Angeles, leaving behind a thriving community life and business. The relationship between CSUN and the Nazarians began shortly after when Younes and Soraya's oldest son, David, enrolled at CSUN in 1978. Following in the family footsteps, David excelled in business and entrepreneurship and the entire Nazarian family became fixtures in LA business, culture and philanthropy.

In 2014, David made a transformative mark at CSUN with his \$10 million gift to name the *David Nazarian College of Business and Economics*. Over the last few years, the entire family has become engaged with CSUN and in the arts and culture landscape of the region.



Giles T. Brown Trust Endows Support for Graduate Studies at CSUF

The Giles T. Brown Trust awarded nearly \$3.2 million to Cal State Fullerton to support the *Giles T. Brown Endowment for Graduate Studies*. Established in 2002 and sustained with a bequest in 2014 of \$580,000, the endowment is used to award grants to attract talented graduate students, cover student travel costs, fund visiting scholars and provide thesis awards.

Giles T. Brown joined Cal State Fullerton's faculty in 1960 as professor of history. Over his 23 year career at CSUF, Dr. Brown served as department chair, dean of graduate studies and vice president for academic programs before retiring in 1983.

Although Dr. Brown passed away in 2013, his legacy of support for CSUF remains. In addition to the gift that established the endowment in his name, Dr. Brown funded seven \$100,000 gift annuities and his name also graces a conference room in McCarthy Hall. In honor of his immense contributions to the university, Cal State Fullerton highlights an outstanding graduate student each year with the *Giles T. Brown Outstanding Thesis Award*.

Hollywood Foreign Press Association Contributes \$2 Million to CSUN Cinema and Television

A wing of Manzanita Hall was named in honor of the Hollywood Foreign Press Association and its \$2 million contribution to the *Department of Cinema and Television Arts* in the Mike Curb College of Arts, Media, and Communication at Cal State Northridge.

The gift, which now brings the HFPA's support of CSUN to nearly \$3 million since 1996, will be used to upgrade equipment and systems in the *Hollywood Foreign Press Association Wing*. In addition, the newly-established *Hollywood Foreign Press Association Scholars Program Fund* will advance undergraduate and graduate opportunities for low-income and historically underrepresented populations in the entertainment industry.

San José State Receives \$2 Million from Koret Foundation to Fund Data Analysis, Scholarships

A \$2 million gift to San José State from the Koret Foundation's University Partners Initiative will fund a student information analytics system, enhance the *Spartan Scholars Program* to increase retention and graduation of underserved and first-generation students, and support the Koret Scholars, which provides scholarships for EOP students and student veterans.

The Koret Foundation provides funding to improve student success and building long-term capacity at leading education institutions participating in the program.

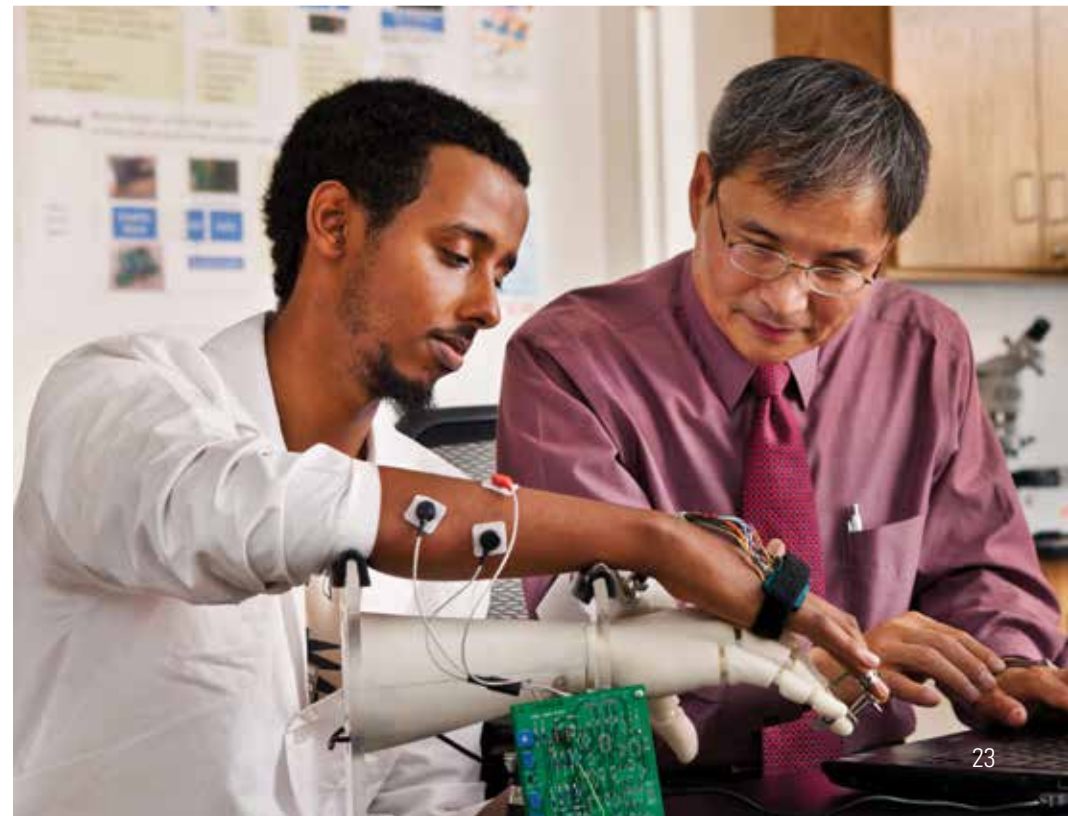
Seiler Endowed Faculty Fellow at SDSU Supports Accounting Faculty

San Diego State alumni Richard and Susan Seiler made an endowed gift to the *Fowler College of Business* to establish the *Richard and Susan Seiler Endowed Faculty Fellow in Taxation*. The gift, which was made in tribute to one of Richard Seiler's professors, Charles Lamden, will support a faculty member within the Charles Lamden School of Accountancy at SDSU.

Richard and Susan Seiler have a long history of supporting and giving back to SDSU, including making a previous gift to help build the Page Pavilion in the Fowler College of Business.



Hollywood Foreign Press Association Wing at CSUN





Chico State

“Chico State created a central focus for education, while bringing in students from across America.”

— Valene L. Smith, Chico State



The *Roadrunner Scholarship Fund*, which directly supports scholarships for student-athletes at Cal State Bakersfield, had another record year raising \$773,633 to provide more than 200 student scholarships.

Bob and Nancy Foster Endow Lecture Series, Faculty and Staff Awards at San José State

Bob and Nancy Foster committed \$1 million to San José State to endow a lecture series and award program for faculty and students. The *Foster Family Endowed Lectures in Classical Political Theory* will consist of annual events and courses investigating how classical political theory relates to contemporary politics.

The *Foster Family Democratic Practice Award* will explore contemporary sociocultural challenges and will be awarded annually to projects that demonstrate how classical political theory and history enhance the democratic process.

Bob Foster graduated from San José State in 1969 and received an honorary doctorate in 2015. He is formerly the mayor of Long Beach and was president of Southern California Edison from 2002 to 2006.

Founding Faculty Estate Gift Endows Funds for CSUB Political Science and Athletics

Cal State Bakersfield received a commitment of \$475,000 from the estate of Dr. Charles McCall, the founding chair of political science when the university first opened in 1970. Dr. McCall's estate gift will provide two endowments that equally support the *Department of Political Science* and *Roadrunner Athletics*.

Eustace-Kwan Family Foundation Gift Ensures SF State Students Are Leaders in Future Careers

The Eustace-Kwan Family Foundation made a \$1.3 million gift to San Francisco State to create the *President's Leadership Fellows Program*, which prepares students to be job and career ready while training them to be leaders in their fields. The new program, made possible with this gift, will expand the Presidential Fellows Program to provide up to 500 student ambassadors with leadership development training.

The gift will also establish a new *Career Services & Leadership Development Office* to further assist SF State students to identify viable career pathways and align their educational goals with career aspirations. The new office will also allow students to develop strategic partnerships with organizations in numerous industries to identify placement options, externships, internships, full-time job opportunities and special consulting projects.

Memorial Gift Establishes Shattuck Chair in Colonial American History

Elizabeth H. Shattuck donated \$1.5 million to establish the *Peter H. Shattuck Chair in Colonial American History* at Sacramento State, the second endowed chair in the university's history. In honor of her late husband, Elizabeth Shattuck's gift will provide the opportunity to recruit and retain an outstanding and distinguished scholar while preserving Peter's legacy as an emeritus professor at Sac State.

DIRECTED RESEARCH

In 2016-2017, CSU campuses received record-breaking gifts to support directed research, including a \$110 million commitment to Cal Poly San Luis Obispo.

Throughout our history, the CSU has provided unique opportunities for undergraduate and graduate students to work with faculty on meaningful, rigorous and cutting-edge directed research projects. These opportunities for our students – through your generous gifts – allow us to push the boundaries of knowledge and make discoveries that positively impact humanity and the natural world.

CSU-Record Gift from Bill and Linda Frost Transforms Undergraduate Research

Alumnus Bill and Linda Frost announced a historic \$110-million commitment to Cal Poly San Luis Obispo to transform undergraduate research at the university. The Frost's gift – the largest in the history of the CSU – will broadly fund undergraduate research in the *College of Science and Mathematics*, including facilities, student and faculty stipends, and equipment.

NCRF Gift Launches Cal Poly Pomona's Liquid Rocket Laboratory to New Heights

A \$1.67 million gift commitment from The National College Resources Foundation is supporting the *Liquid Rocket Laboratory* in Cal Poly Pomona's aerospace engineering program. NCRF's gift will provide funding for lab space and equipment related to an upcoming national student competition to launch a liquid-fueled rocket to 45,000 feet, with the goal of ultimately launching a rocket into space. NCRF promotes diversity and opportunities for underrepresented students and is collaborating to build student interest in STEM fields and space exploration.

Kern Gift to SF State Builds Research Greenhouse at Romberg Tiburon Center

John H. Kern, a volunteer at the Romberg Tiburon Center at San Francisco State for more than thirty years, made a gift of over \$1 million to build the center's *John H. Kern Greenhouse*. The greenhouse will provide a high-tech, environmentally-controlled system for sustaining wetland plants and tank-based research.



 CSU-Record Gift from Bill and Linda Frost



 Romberg Tiburon Center

Gift from Keck Foundation Inspires Student Success in the Sciences

Sacramento State received a \$500,000 gift from the W.M. Keck Foundation for the *Sustainable Interdisciplinary Research to Inspire Undergraduate Success* (SIRIUS) project, which incorporates course-based undergraduate research experiences into existing laboratory courses. The goal of SIRIUS is to foster collaboration, critical thinking and science technology literacy – all of which will help improve the retention and success of students, especially those underrepresented in the sciences.

Once-In-A-Lifetime Donation of Bartleson Ranch Will Foster Student Research and Internships

Jan and Stuart Bartleson donated their 450-acre avocado and lemon orchard, valued at \$11.3 million, to Cal Poly San Luis Obispo. Their gift will enable longer-term research projects, provide numerous internship opportunities for students and facilitate income-producing industry partnerships for the college.

Stu and Jan Bartleson were married for twenty years until Stu's recent death in January 2017. Their gift – the *Bartleson Ranch* – is the largest private land donation within San Luis Obispo County in the university's 115 year history.

Chico State Anthropology Museum Receives Impactful Gift from Professor Emerita

Chico State's *Valene L. Smith Museum of Anthropology* already supports one of the country's premier museum studies programs. Thanks to a new \$250,000 donation from Professor Emerita Valene L. Smith, the museum's educational and community impact will now transform more lives through a much-needed museum expansion.

Dr. Smith taught in Chico State's anthropology department from 1967 to 1988, and has been a major supporter of the university's Museum of Anthropology since its inception in 1971. She was nominated Outstanding Professor in 1981.



A Chico State alumnus and local rancher expressed a passion for the university's herbarium with a \$2 million testamentary commitment, ensuring future generations have access to one of the largest collections of specimen in Northern California.

PUBLIC BENEFIT



Since our founding in 1857, the CSU has served the people of California and strives to fulfill our public mission to build a shared future through accessible, affordable and quality higher education. A century-and-a-half later, we're more committed to our communities, regions and state than ever before.

Through the dedication and contributions of our donors, champions and partners, the CSU and its campuses are building strong and inclusive communities across the Golden State.

Bechtel Foundation Grants Support CSU Teacher Prep Efforts

The S. D. Bechtel, Jr. Foundation provided grants to 11 CSU campuses — totaling more than \$10 million — to further expand the CSU's *New Generation of Educators Initiative*. The grants will be used to broaden practice-based training to support new K-8 teachers in implementing the state's math and science standards. For more than a century, the CSU has led teacher training in the state, conferring the largest number of education degrees and multi-subject credentials to California's teachers.

Humboldt Alumna's Bequest Boosts Future Teachers

Humboldt State alumna Alice Whitson left a \$678,947 bequest to support future teachers. As the CSU and HSU work to reduce California's critical teacher shortage, Whitson's bequest will enhance the university's *Multiple-Subject Teaching Credential Program*. A lifelong teacher, Alice attributed her success to the education she received at Humboldt State.

Gift Supports Computer Science, STEM Education in Salinas Valley

The Sally Hughes Church Foundation, which supports youth in the Salinas Valley, provided a \$100,000 gift to Cal State Monterey Bay in support of its *Communication Design* program. The gift from the Sally Hughes Church Foundation provided funds to purchase new, state-of-the-art equipment in support of CSUMB's trailblazing efforts to ensure that students from underserved communities have access to computer science and STEM education.



Claire Giannini Fund Provides Support to Teacher Pathway Program

The Claire Giannini Fund provided over \$80,000 in support of the *South County Teacher Pathway Program* at Cal State Monterey Bay. Based in the university's College of Education, the program is a collaboration between CSUMB and Hartnell Community College to relieve the high demand for high-quality, prepared teachers in the region.

The Giannini Fund grant provides iPads for students to increase their technological skills and supports faculty and local programing. The goal of the program – and the Giannini Fund grant – is to remove unnecessary barriers and further enable students to complete their teaching credential within five years.

Stuart Foundation Grant Creates Opportunity through Art

Cal State San Marcos professor of music, Dr. Merryl Goldberg, is on a mission to change public perception of the arts. With the help of a \$200,000 grant from the Stuart Foundation, Dr. Goldberg and the university are able to fund the research-based initiative, *ARTS=OPPORTUNITY*, which focuses on improving K-12 arts literacy. Cal State San Marcos is one of only three organizations in California awarded the prestigious Stuart Foundation grant.



Chevron Supports STEM Education

California-based Chevron Corporation, a longtime supporter and partner of the CSU and its academic and research mission, provided a grant to expand the university's pioneering initiatives that integrate engineering design into K-12 teacher preparation. Since 2014, Chevron has contributed \$1.75 million to the CSU to improve STEM education and teacher preparation.

Chevron also contributed \$250,000 to Cal State East Bay in support of its *Mathematics, Engineering, Science Achievement (MESA)* program. MESA, which is celebrating its 40th anniversary, engages thousands of educationally disadvantaged students in the East Bay region so they excel in STEM and graduate with math-based degrees.

Anonymous Gift Provides Much-Needed Health Services to Fresno Community

A \$125,000 anonymous gift to the Fresno State College of Health and Human Services *Mobile Health Unit Program* will provide much-needed health services to underserved individuals in the region. Designed to alleviate a shortage of primary care providers in the area while providing hands-on training for nursing students, the mobile unit travels around Fresno and surrounding rural communities each week, providing free education and screenings for heart and lung health.

“With this generous gift, we will be able to provide many more highly qualified professionals to address the critical shortage of health care providers in our community.”

– Dr. Phyllis Heintz, CSUB





Fresno Mobile Health Unit

CSUB, Dignity Health Partners in Vital Healthcare Access for Kern County

To help prepare more critically-needed Family Nurse Practitioners (FNP) in Kern County, Dignity Health made a \$450,000, three-year contribution to Cal State Bakersfield. FNP students at CSUB will be educated through the university's Department of Nursing, the most-established program in the region for developing nurses and nurse practitioners. More than simply preparing students for a future in their desired field, this contribution to the program supports a larger effort of service to others in the community.

AT&T, Fremont Bank Gifts Further Hayward Promise

The *Hayward Promise Neighborhood Initiative*, led by Cal State East Bay, received two major gifts to help further its efforts to improve the lives and academics of more than 11,000 residents and 6,000 students in the ethnically diverse, low-income Jackson Triangle neighborhood. AT&T made a \$500,000 gift – as part of its Aspire Connect to Success Competition – in support of the initiative. To date, AT&T has contributed over \$750,000 to the initiative in the last three years.

Cal State East Bay also received a generous \$300,000 gift from Fremont Bank in support of the *Hayward Promise Neighborhood Initiative*. Fremont Bank's gift will also support a new greenspace area in front of the university's Student Administration Building.

Harold K. Brown Collection Documents Civil Rights Movement, African American Experience in San Diego

San Diego State established the *Harold K. Brown Civil Rights and African American Experience Collection*, which preserves historical photographs, documents and oral accounts essential to understanding the African American experience in San Diego and the United States.

The new collection is named in honor of Harold K. Brown, an esteemed alumnus, honorary degree recipient and the first African American administrator in the history of San Diego State. Brown, who first began his relationship with the university as a student in 1953, gifted the SDSU Library with correspondence, newspaper clippings, and audio and video assets connected with the civil rights movement in San Diego.

Mr. Brown also co-founded and chaired the local chapter of the Congress of Racial Equality in 1961. Despite being arrested and jailed for protesting discriminatory hiring, he continued to challenge unfair employment and housing practices by organizing demonstrations and sit-ins throughout San Diego. His oral histories have been recorded by the Civil Rights Oral History Project of the American Folklife Center at the Library of Congress and the Smithsonian Institution's National Museum of African American History and Culture.

STUDENT ATHLETICS



Blair Field at Cal State Long Beach

Student athletics help create a sense of campus and community pride, while developing student-athletes' vital life skills. As a point of entry into higher education for many, CSU athletics programs are critically important to ensuring student achievement and a lifetime of success.

These gifts – made in support of scholarship funds, facility renewals and program funding – will continue to build, strengthen and transform our historic athletics programs and make an indelible mark on student-athletes and alumni.

MLB Legend Gives Back to Cal State Long Beach

Retired Major League Baseball pitching legend Jered Weaver contributed \$500,000 to the *Blair Field* renovation project at Cal State Long Beach, where the three-time All-Star played from 2002 to 2004.

In honor of his continued generosity toward the university and its renowned baseball program, fondly nicknamed *The Dirtbags*, the bullpen at Blair Field has been named the *Jered Weaver Bullpen*. Weaver, who went on from CSULB to play for the Los Angeles Angels of Anaheim and the San Diego Padres for 11 seasons, said that he wanted “to give back to a team that did so much for me.”

Marcus Family Establishes Student-Athlete Scholarship Fund at SF State

San Francisco State received a gift of over \$1.8 million from the George and Judy Marcus Family Foundation to establish the *George and Judy Marcus Student Athlete Scholarship Fund*. This new fund provides support to Gator student-athletes, strengthens SF State's recruiting position and underscores the university's commitment to academic achievement and success for all students.



San Francisco State Student-Athlete Scholarship Fund

Dignity Health Baseball Clubhouse Gift Raises Cal Poly's Game On and Off the Field

Cal Poly San Luis Obispo named its new baseball facility the *Dignity Health Baseball Clubhouse* in recognition of a \$1.25 million contribution by San Francisco-based Dignity Health. The contribution from Dignity Health will be used to complete the clubhouse project, which will include an expanded locker room, state-of-the-art athletic training and physical therapy room, lounge and kitchen area, dressing room for umpires, coaches' offices and study room.

Additionally, this contribution to Cal Poly San Luis Obispo will raise the capacity of Baggett Stadium to between 3,250 and 3,500 seats. It will also provide Mustang student-athletes with the tools to succeed on the field while gaining the leadership training and hands-on experiences needed to succeed long after graduation.

CEFCU Gift Supports Spartan Athletics, Historic Stadium

Citizens Equity First Credit Union made an \$8 million commitment to San José State to support and strengthen athletics operations, improve the historic stadium and other facilities, and allow for the full funding of scholarship commitments for student-athletes, among other potential uses.

In recognition of the 15-year agreement, San José State renamed Spartan Stadium to *CEFCU Stadium – Home of the Spartans*. The financial commitment from CEFCU is the fifth-largest university stadium sponsorship among schools in the Group of 5 conferences, and the second largest in the Mountain West Conference.

LA Football Club Pledges Support for Cal State LA Athletics

The LA Football Club, a new Major League Soccer team, pledged \$1.6 million in support of Cal State LA, including funding for a renovation of the university's *Track and Athletics Field* in the *Billie Jean King Sports Complex*. The upgrades include a new track, synthetic turf field and lighting system. LAFC, which is also building its new practice facility on the Cal State LA campus, is working with the university to develop kinesiology curriculum, master's programs and student internship opportunities.

Cal Poly Golf Program Boosted by William and Cheryl Swanson Endowed Gift

Cal Poly San Luis Obispo alumnus William H. Swanson and his wife, Cheryl, created a \$10 million endowment to support the *Swanson Cal Poly Golf Program*, renamed by the university in May 2017 in recognition of their gift.

The Swanson's gift will provide thousands of dollars in scholarship support each year to student-athletes in the golf program. In addition, the endowment will provide programmatic support for the golf program including recruitment, travel and equipment. The endowment of the golf program through this gift, as well as associated gifts from other donors, will put the men's and women's golf programs in better positions to contend for conference and national championships.

William Swanson, who retired from Raytheon Company as chairman and CEO in 2014, has served as chair of the Cal Poly Foundation since 2006. He previously served on the Cal Poly President's Cabinet and the College of Engineering's Dean's Advisory Council.



 Dignity Health Baseball Clubhouse

**“I’m a graduate of the CSU and
have always considered the
college education I received
to have been one of the most
important experiences of my life.”**

— Mario Giannini, CSULB



CSULB



UNIVERSITY SUPPORT

As the resource and support needs of the CSU and its campuses continue to evolve, strong university support is vital to our current and long-term success.

This year, powered by our incredible donors and leaders, the CSU welcomed new gifts and campaigns – and celebrated with several campuses for surpassing their giving goals.

Rising in the East: Cal State East Bay's First Campaign Strikes Gold

Fresh off the inaugural year of its first-ever comprehensive campaign, Cal State East Bay has received more than half of its \$60 million goal. Titled *Rising in the East: The Campaign for Cal State East Bay*, the cross-community effort will allow the university to gain prominence as a K-12 STEM education leader and extend the reach and impact of programs like the *Hayward Promise Neighborhood Initiative*.

Entering its second year, gifts to *Rising in the East* have already funded two endowed professorships, a faculty excellence fund, facility renovations and over \$5.5 million in new student scholarships.

Alumnus Don B. Huntley Donates Pistachio Farm to Cal Poly Pomona

At a November 2016 ceremony, alumnus Don B. Huntley was recognized for his planned gift of a 475-acre pistachio farm to Cal Poly Pomona. To recognize this transformational gift and Don's generous legacy, Cal Poly Pomona named the *Don B. Huntley College of Agriculture* in his honor.

A long-time champion of the university and its *Learn by Doing* ethos, Don has supported research and student scholarships, donated hundreds of pieces of art from his western art collection and funded the creation of an on-campus vineyard.



Don B. Huntley Pistachio Farm

James M. Rosser Hall Naming Recognizes Legacy of Generous Leadership

Cal State LA dedicated *James M. Rosser Hall*, formerly known as Wing B of the Wallis Annenberg Integrated Sciences Complex, in April 2017 to honor the legacy of scientist, educator, philanthropist and president emeritus James M. Rosser. During his 34 years of leadership, Dr. Rosser transformed Cal State LA into a beacon of academic excellence and helped shape the city of Los Angeles into a model of diversity and inclusivity.

Faculty and Staff Giving Initiative Raises \$130,000 for Cal State Bakersfield

For the second consecutive year, a faculty and staff giving initiative at Cal State Bakersfield raised more than \$130,000 from the campus community, increasing awareness for the *CSUB Foundation* and highlighting the university's most vital needs.

Crowdfunding Platform Creates New Fundraising Options at Humboldt State

A new crowdfunding platform launched at Humboldt State highlighted creative fundraising opportunities and engaged campus partners in successful fundraising initiatives. Four projects were tested in 2016-2017, including a successful \$20,000 campaign to fund repairs on Humboldt State's research vessel, the *Coral Sea*.

Tower Society Sends Chico State Gift Commitments to New Heights

Chico State's focus to engage its alumni, parents and friends through the *Tower Society* provided the university with record support of more than \$14 million in gift commitments.

Transform Tomorrow | The Campaign for Chico State passed the 50 percent mark in their efforts to raise \$100 million by 2020. Progress was made in advancing the three campaign priorities of building cutting-edge facilities, empowering student success and investing in people.



Cal State LA celebrates naming of James M. Rosser Hall



Humboldt State Students on the *Coral Sea*



Record-Breaking Campaign for SDSU Concludes With Gifts from Community Leaders

The record-breaking *Campaign for SDSU* concluded on June 30, 2017, with \$815.17 million raised to increase the university's endowment, ensure future growth, support current students and faculty, and enhance academic programming at San Diego State.

The campaign's initial goal of \$750 million was reached in October 2016, when San Diego Padres executive chairman Ron Fowler and his wife, Alexis – both SDSU alumni – made a \$25 million matching gift to name the *Fowler College of Business*. SDSU then went on to raise an additional \$65 million before the campaign came to a close on June 30, 2017.

In total, more than 74,000 donors contributed to *The Campaign for SDSU*, including 53,200 first-time donors. The university also received more than 211,000 individual gifts, including 140 gifts of \$1 million and above. Faculty and staff giving amounted to more than 10 percent – \$88 million – of the \$815 million raised.

Campaign for CSUSB Makes Big Strides to Record Goal

Cal State San Bernardino raised over \$9.2 million in philanthropic support for 2016-17, just a year after entering the public phase of the *Campaign for CSUSB*. This year's philanthropic efforts saw longtime donors and new friends of CSUSB meeting the ever-increasing need for support to the university's most vulnerable students. By June 30, 2017, the university had already raised over \$39 million – 78 percent – of the *Campaign for CSUSB's* \$50 million goal.

Moving Forward Together at Cal State San Marcos

With eighteen months remaining in its comprehensive campaign, *Forward Together*, Cal State San Marcos closed the 2016-2017 fiscal year reaching 76 percent toward its \$50 million campaign goal. Since launching the campaign, Cal State San Marcos has more than doubled its average annual giving and extended its pipeline of support with multi-year pledges and deferred giving. This year, the university secured \$4 million in planned gifts.



TRUSTEES' AWARD

23 CSU Students Earn Trustees' Award for Outstanding Achievement

Twenty-three students from across the CSU received the *2017 CSU Trustees' Award for Outstanding Achievement*. The award – and accompanying scholarships ranging from \$6,000 to \$12,000 – is given to CSU students who demonstrate superior academic performance, personal accomplishments, community service and financial need.

In 2017, the CSU Trustees' Award distributed \$155,000 in scholarships, the highest total in the history of the program. The award program was originally founded as an endowed scholarship by the William Randolph Hearst Foundation, and was reinvigorated by the generosity of Trustee Emeritus Ali C. Razi, whose namesake award recognizes the year's top scholar with a \$12,000 scholarship.

This year's Razi Scholar is Alejandro Arias, a first generation college student attending San Diego State. Alejandro faced – and overcame – a variety of challenges adapting to the campus environment and family obligations, completing two associate degrees before transferring to SDSU.

Professionally, Alejandro has worked with students and families to navigate the educational system and hopes to become a college faculty member in the future. Through various fellowships, he has learned to ask the right research questions and how to conduct meaningful research that addresses the challenges of college students.



Razi Scholar Alejandro Arias with Chancellor White



Trustee's Award Scholars: Gracelove Simons, Amanda Garcia, Malyssa Gunderson, Aileen Gonzalez, Rehan Siddique, Shelby Paige Moshier, Matthew Kessler, Zahra Shine, Brittany Wood, Anthony Robles, Emily Shimada, AnnaRose Holder, David Nelson, Paul Chiou, Susan Nisonger Olsen, Carolina Gabaldon, Alejandro Arias, Anaiis Cisco, Essy Barroso-Ramirez, Jeremiah Hernandez, Francisco Fernandez, Jennifer Juarez Yoc and Antonio Garcia.

WANG AWARD



Wang Family Excellence Award Recognizes Extraordinary CSU Faculty, Administrators

The 2017 *Wang Family Excellence Award* recognizes four outstanding faculty members and one outstanding administrator from across the CSU. The five award recipients, through extraordinary commitment and dedication, have distinguished themselves by exemplary contributions and achievements.

The 2017 Wang Family Excellence Award recipients are:

Mariappan Jawaharlal, Ph.D., Outstanding Faculty, Cal Poly Pomona

Anita Silvers, Ph.D., Outstanding Faculty, San Francisco State

Keith A. Trujillo, Ph.D., Outstanding Faculty, Cal State San Marcos

Ruth H. Yopp-Edwards, Ph.D., Outstanding Faculty, Cal State Fullerton

Debra Y. Griffith, Ed.D., Outstanding Administrator, San José State

This year's awardees are committed to furthering the CSU's mission and vision contributing to student success, and enhancing excellence in teaching, scholarship and the public good. Each recipient is given a \$20,000 award.

First established by then-CSU Trustee Stanley Wang through a \$1 million gift in 1998, the *Wang Family Excellence Award* was reestablished in 2015. In 2017, Trustee Emeritus Stanley Wang generously gifted an additional \$2.5 million to endow the award fund, allowing the CSU to recognize outstanding faculty, staff and administrators for years to come. In total, Trustee Emeritus Wang's gifts to the CSU have totaled \$3.8 million.

Top Row:

**Mariappan Jawaharlal, Ph.D.,
Anita Silvers, Ph.D.**

Middle Row:

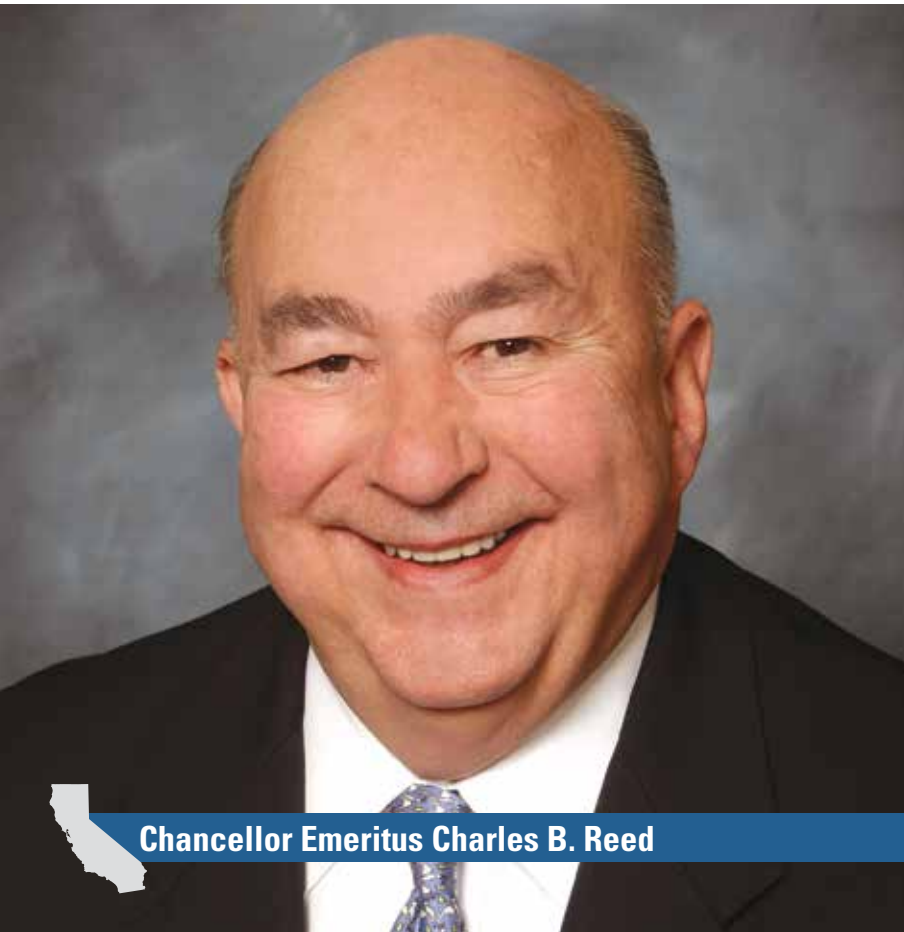
**Keith A. Trujillo, Ph.D.
Ruth H. Yopp-Edwards, Ph.D.**

Bottom Row:

Debra Y. Griffith, Ed.D.



IN MEMORIAM



 Chancellor Emeritus Charles B. Reed

“Charlie will always be remembered as a formative figure in our university’s history and as a tenacious, passionate champion of public higher education.”

— Chancellor Timothy P. White

Remembering CSU Chancellor Emeritus Charles B. Reed

Following the passing of Chancellor Emeritus Charles B. Reed in December 2016, the Reed Family encouraged contributions in his memory to the *Charles B. Reed Scholarship Fund*. In honor of his 14 years of service as CSU chancellor and countless contributions to higher education writ large, the *Reed Scholarship Fund* has received over \$46,000 in new contributions.

The fund, established after Chancellor Reed’s retirement in 2012, annually supports a named scholar for the *CSU Trustees’ Award for Outstanding Achievement*. The fund was originally seeded when Chancellor Reed donated proceeds from his *TIAA-CREF 2012 Theodore M. Hesburgh Award for Leadership Excellence*, which was then matched by the CSU Foundation Board of Governors.

During Charlie Reed’s 14 year tenure as chancellor of the CSU:

- Student enrollment increased by nearly 70,000 students
- The 23rd campus – Cal State Channel Islands – was established
- Seven CSU campuses began offering doctoral programs in education
- The CSU’s Council on Ocean Affairs, Science and Technology (COAST) was founded

Gifts to Support Scholarships, Faculty Honor Legacy of CSUF President Emeritus Gordon

In honor of the incredible life and legacy of President Emeritus Milton A. Gordon and his wife, Dr. Margaret Faulwell Gordon, donors provided over \$200,000 to Cal State Fullerton to fund scholarships and faculty support.

The longest serving president in Cal State Fullerton history, Dr. Gordon led a period of immense growth – in student population, campus footprint and university impact – during his 21-year tenure. He passed away on April 18, 2017, at the age of 81.

Karnig Scholarship Endowment A Fitting Tribute to the Legacy of CSUSB Trailblazer

The Cal State San Bernardino community came together to celebrate the life and legacy of President Emeritus Albert Karnig and support the *President Albert and Marilyn Karnig Scholarship Endowment*. The endowment, which raised nearly \$10,000 in 2016-2017, provides scholarships for the *CSUSB President's Academic Excellence Scholars* (PAES) program, which Karnig founded.

CSUSB's PAES scholarships – which provide \$25,000 over four years – are offered to the top one percent of graduating high school seniors in San Bernardino County. Karnig, who passed away on May 4, 2017, served as the third president of Cal State San Bernardino from 1997 to 2012.



APPENDIX



Philanthropic Productivity

	2014/2015 Total Gift Commitments	2015/2016 Total Gift Commitments	2016/2017 Total Gift Commitments	Three Year Average	2014/2015 Total Gift Receipts	2015/2016 Total Gift Receipts	2016/2017 Total Gift Receipts	Three Year Average
GROUP I								
Bakersfield	\$8,299,255	\$7,609,454	\$3,626,839	\$6,511,849	\$5,950,904	\$5,485,516	\$3,931,269	\$5,122,563
Channel Islands	\$6,387,261	\$5,349,680	\$2,012,971	\$4,583,304	\$1,948,948	\$4,157,407	\$2,643,308	\$2,916,554
Dominguez Hills	\$5,784,070	\$5,781,069	\$6,274,686	\$5,946,608	\$4,165,045	\$2,379,013	\$6,904,613	\$4,482,890
East Bay	\$4,328,334	\$3,888,800	\$3,167,637	\$3,794,924	\$3,330,561	\$1,523,283	\$1,802,403	\$2,218,749
Humboldt	\$7,469,405	\$4,359,738	\$4,106,249	\$5,311,797	\$5,605,999	\$4,425,473	\$4,730,779	\$4,920,750
Los Angeles	\$9,358,448	\$14,312,183	\$14,154,100	\$12,608,244	\$9,210,748	\$4,747,845	\$17,227,527	\$10,395,373
Maritime Academy	\$1,834,599	\$3,525,210	\$2,108,171	\$2,489,327	\$1,765,379	\$3,474,795	\$2,155,968	\$2,465,381
Monterey Bay	\$5,127,213	\$20,321,708	\$7,982,238	\$11,143,720	\$4,706,677	\$14,119,699	\$5,852,156	\$8,226,177
San Bernardino	\$14,464,157	\$15,465,284	\$9,239,166	\$13,056,202	\$3,949,107	\$3,986,011	\$15,681,888	\$7,872,335
San Marcos	\$10,369,013	\$5,708,678	\$7,398,978	\$7,825,556	\$4,430,094	\$4,046,754	\$3,597,851	\$4,024,900
Stanislaus	\$2,088,417	\$1,978,680	\$3,773,462	\$2,613,520	\$1,919,861	\$2,112,353	\$2,674,544	\$2,235,586
	\$75,510,172	\$88,300,484	\$63,844,497	\$75,885,051	\$46,983,323	\$50,458,149	\$67,202,306	\$54,881,259
GROUP II								
Chico	\$11,637,940	\$7,354,094	\$14,243,332	\$11,078,455	\$7,409,955	\$5,952,011	\$7,739,647	\$7,033,871
Pomona	\$21,831,382	\$19,888,147	\$15,400,415	\$19,039,981	\$19,462,695	\$7,581,610	\$6,562,760	\$11,202,355
Sacramento	\$15,000,697	\$18,259,691	\$26,353,429	\$19,871,272	\$9,657,969	\$15,548,973	\$16,193,560	\$13,800,167
Sonoma	\$10,487,965	\$13,970,564	\$8,692,352	\$11,050,294	\$8,751,276	\$9,087,307	\$6,317,559	\$8,052,047
	\$58,957,984	\$59,472,496	\$64,689,528	\$61,040,003	\$45,281,895	\$38,169,901	\$36,813,526	\$40,088,441
GROUP III								
Fresno	\$16,930,192	\$18,453,606	\$18,327,765	\$17,903,854	\$18,876,049	\$15,982,385	\$14,287,031	\$16,381,822
Fullerton	\$17,236,266	\$21,623,210	\$21,517,735	\$20,125,737	\$10,998,659	\$13,338,085	\$17,878,672	\$14,071,805
Long Beach	\$26,026,794	\$31,046,917	\$29,419,422	\$28,831,044	\$21,868,846	\$16,986,791	\$23,688,771	\$20,848,136
Northridge	\$19,511,296	\$19,627,065	\$22,475,329	\$20,537,897	\$12,856,581	\$17,371,490	\$14,799,898	\$15,009,323
San Diego	\$87,703,320	\$98,658,516	\$87,631,097	\$91,330,978	\$81,810,239	\$79,780,852	\$85,455,394	\$82,348,828
San Francisco	\$14,619,779	\$22,452,240	\$17,131,701	\$18,067,907	\$9,483,171	\$14,829,287	\$14,870,941	\$13,061,133
San José	\$12,000,620	\$39,326,040	\$30,351,910	\$27,226,190	\$13,537,902	\$25,549,266	\$21,533,330	\$20,206,833
San Luis Obispo	\$71,861,494	\$85,973,445	\$141,743,555	\$99,859,498	\$47,508,525	\$33,734,687	\$38,308,710	\$39,850,641
	\$265,889,761	\$337,161,039	\$368,598,514	\$323,883,105	\$216,939,972	\$217,572,843	\$230,822,747	\$221,778,521
Chancellor's Office	\$1,494,809	\$2,650,659	\$4,101,191	\$2,748,886	\$3,991,035	\$3,233,589	\$4,260,641	\$3,828,422
GRAND TOTAL	\$401,852,726	\$487,584,678	\$501,233,730	\$463,557,045	\$313,196,225	\$309,434,482	\$339,099,220	\$320,576,642

Note 1: Gift Commitments include new gifts, new pledges and revocable deferred commitments. Gift Receipts reflect assets received by the University in the form of new gifts and pledge payments.

Note 2: In 2016/2017, Fullerton, Northridge and San Francisco moved from Peer Group 2 to Peer Group 3.

Note 3: Humboldt revised gift receipts downward for 2014/2015 by \$1,473,641 and for 2015/2016 by \$1,718,179 due to errors in the reporting of certain contractual research funds in those years.

Note 4: Humboldt revised gift commitments downward for 2014/2015 by \$275,979 and for 2015/2016 by \$1,324,689 due to errors in the reporting of certain contractual research funds in prior years.

Note 5: Sonoma concluded a campaign for the Wine Spectator Learning Center in 2015/2016.

Charitable Gift Commitments

GROUP I	New Charitable Gifts	New Pledges	Revocable Deferred Gifts (Face Value)	Native American & Government Contributions	Total Gift Commitments	2016/2017 General Fund	Gift Commitments as a Percent of the General Fund
Bakersfield	\$2,108,417	\$1,043,422	\$475,000	\$0	\$3,626,839	\$64,803,309	6%
Channel Islands	\$1,349,471	\$642,168	\$1,000	\$20,332	\$2,012,971	\$71,013,910	3%
Dominguez Hills	\$1,785,287	\$4,410,026	\$5,000	\$74,373	\$6,274,686	\$78,847,352	8%
East Bay	\$1,793,302	\$654,335	\$620,000	\$100,000	\$3,167,637	\$88,090,361	4%
Humboldt	\$3,878,280	\$220,244	\$0	\$7,725	\$4,106,249	\$73,852,510	6%
Los Angeles	\$11,127,849	\$2,216,250	\$810,001	\$0	\$14,154,100	\$132,284,339	11%
Maritime Academy	\$2,065,341	\$42,830	\$0	\$0	\$2,108,171	\$29,594,176	7%
Monterey Bay	\$5,486,920	\$1,395,318	\$1,100,000	\$0	\$7,982,238	\$68,123,583	12%
San Bernardino	\$3,201,266	\$3,509,005	\$2,377,098	\$151,797	\$9,239,166	\$103,197,408	9%
San Marcos	\$2,833,373	\$529,700	\$4,020,003	\$15,902	\$7,398,978	\$75,782,552	10%
Stanislaus	\$2,376,317	\$1,391,565	\$0	\$5,580	\$3,773,462	\$62,395,147	6%
	\$38,005,823	\$16,054,863	\$9,408,102	\$375,709	\$63,844,497	\$847,984,647	8%
GROUP II							
Chico	\$7,477,147	\$3,081,185	\$3,685,000	\$0	\$14,243,332	\$108,499,232	13%
Pomona	\$5,422,027	\$3,703,969	\$6,274,419	\$0	\$15,400,415	\$131,369,342	12%
Sacramento	\$13,052,549	\$5,925,880	\$7,375,000	\$0	\$26,353,429	\$148,839,137	18%
Sonoma	\$5,206,420	\$2,374,882	\$1,082,200	\$28,850	\$8,692,352	\$63,135,883	14%
	\$31,158,143	\$15,085,916	\$18,416,619	\$28,850	\$64,689,528	\$451,843,594	14%
GROUP III							
Fresno	\$11,893,129	\$3,185,785	\$3,233,129	\$15,722	\$18,327,765	\$138,922,532	13%
Fullerton	\$15,828,759	\$2,004,500	\$3,648,600	\$35,876	\$21,517,735	\$171,458,661	13%
Long Beach	\$14,780,376	\$6,196,046	\$8,443,000	\$0	\$29,419,422	\$184,845,136	16%
Northridge	\$10,153,586	\$8,173,736	\$4,148,007	\$0	\$22,475,329	\$181,550,096	12%
San Diego	\$71,467,669	\$9,152,484	\$6,985,944	\$25,000	\$87,631,097	\$179,551,596	49%
San Francisco	\$10,950,665	\$4,806,035	\$1,375,001	\$0	\$17,131,701	\$154,811,859	11%
San José	\$12,944,515	\$13,957,395	\$3,450,000	\$0	\$30,351,910	\$146,763,282	21%
San Luis Obispo	\$21,094,978	\$41,613,727	\$79,034,850	\$0	\$141,743,555	\$124,600,468	114%
	\$169,113,677	\$89,089,708	\$110,318,531	\$76,598	\$368,598,514	\$1,282,503,630	29%
Chancellor's Office	\$3,496,191	\$605,000	\$0	\$0	\$4,101,191	\$151,020,253	3%
GRAND TOTAL	\$241,773,834	\$120,835,487	\$138,143,252	\$481,157	\$501,233,730	\$2,733,352,124	18%

Note 1: Group I campuses generally have less than 5,000 individual donors, less than 10 full-time professional fundraisers, and less than \$25 million in endowment market value. Group II campuses generally have between 5,000 and 10,000 individual donors, between 10 and 20 full-time professional fundraisers, and between \$25 million and \$50 million in endowment market value. Group III campuses generally have over 10,000 individual donors, over 20 full-time professional fundraisers, and over \$50 million in endowment market value.

Note 2: In 2016/2017, Fullerton, Northridge and San Francisco moved from Peer Group 2 to Peer Group 3.

Gift Receipts by Source

GROUP I	INDIVIDUALS			ORGANIZATIONS			Gift Receipts Total	Total Number Individual Donors
	Alumni	Parents	Other Individuals	Foundations	Corporations	Other Organizations		
Bakersfield	\$108,619	\$32,225	\$996,470	\$134,449	\$2,092,854	\$566,652	\$3,931,269	1,113
Channel Islands	\$49,676	\$9,784	\$634,761	\$873,250	\$984,992	\$90,845	\$2,643,308	1,122
Dominguez Hills	\$183,648	\$278,014	\$212,140	\$4,521,339	\$1,672,260	\$37,212	\$6,904,613	1,969
East Bay	\$450,896	\$1,498	\$388,759	\$139,871	\$761,808	\$59,571	\$1,802,403	1,649
Humboldt	\$1,617,877	\$93,706	\$807,451	\$964,528	\$850,361	\$396,856	\$4,730,779	5,929
Los Angeles	\$601,867	\$60,060	\$1,044,403	\$6,660,553	\$1,480,382	\$7,380,262	\$17,227,527	3,684
Maritime Academy	\$326,898	\$97,096	\$1,321,414	\$17,671	\$273,627	\$119,262	\$2,155,968	560
Monterey Bay	\$31,163	\$17,079	\$2,240,825	\$1,904,017	\$796,416	\$862,656	\$5,852,156	8,724
San Bernardino	\$235,663	\$35,526	\$11,736,660	\$2,543,182	\$915,330	\$215,527	\$15,681,888	3,646
San Marcos	\$57,376	\$27,590	\$680,577	\$1,734,809	\$707,359	\$390,140	\$3,597,851	1,575
Stanislaus	\$186,016	\$2,020	\$977,750	\$747,547	\$663,305	\$97,906	\$2,674,544	1,393
	\$3,849,699	\$654,598	\$21,041,210	\$20,241,216	\$11,198,694	\$10,216,889	\$67,202,306	31,364
GROUP II								
Chico	\$1,721,610	\$639,746	\$1,426,096	\$1,841,944	\$1,390,119	\$720,132	\$7,739,647	14,418
Pomona	\$2,179,458	\$61,208	\$1,838,276	\$445,160	\$1,661,558	\$377,100	\$6,562,760	5,004
Sacramento	\$2,141,192	\$31,383	\$9,615,822	\$2,758,946	\$1,230,245	\$415,972	\$16,193,560	40,433
Sonoma	\$758,421	\$28,058	\$2,858,844	\$1,150,008	\$1,480,431	\$41,797	\$6,317,559	2,344
	\$6,800,681	\$760,395	\$15,739,038	\$6,196,058	\$5,762,353	\$1,555,001	\$36,813,526	62,199
GROUP III								
Fresno	\$3,755,650	\$164,644	\$3,019,791	\$1,725,163	\$4,338,571	\$1,283,212	\$14,287,031	9,136
Fullerton	\$1,634,677	\$410,008	\$5,885,105	\$4,802,967	\$4,360,094	\$785,821	\$17,878,672	13,417
Long Beach	\$5,438,709	\$333,460	\$9,809,081	\$3,603,006	\$3,573,481	\$931,034	\$23,688,771	18,712
Northridge	\$4,863,452	\$290,089	\$2,311,853	\$4,059,918	\$2,357,311	\$917,275	\$14,799,898	16,136
San Diego	\$31,480,716	\$1,802,994	\$19,075,896	\$16,797,927	\$6,467,022	\$9,830,839	\$85,455,394	42,622
San Francisco	\$3,740,907	\$18,976	\$3,506,839	\$4,695,505	\$2,178,377	\$730,337	\$14,870,941	3,733
San José	\$5,908,672	\$174,391	\$4,214,490	\$6,524,999	\$4,582,598	\$128,180	\$21,533,330	7,627
San Luis Obispo	\$13,732,817	\$1,757,239	\$3,456,265	\$8,149,667	\$7,906,002	\$3,306,720	\$38,308,710	10,062
	\$70,555,600	\$4,951,801	\$51,279,320	\$50,359,152	\$35,763,456	\$17,913,418	\$230,822,747	121,445
Chancellor's Office	\$0	\$0	\$2,679,002	\$1,054,692	\$473,794	\$53,153	\$4,260,641	168
GRAND TOTAL	\$81,205,980	\$6,366,794	\$90,738,570	\$77,851,118	\$53,198,297	\$29,738,461	\$339,099,220	215,176

Note 1: Number of Individual Donors includes alumni, parents, faculty, staff, students, and friends of the University.

Note 2: In 2016/2017, Fullerton, Northridge and San Francisco moved from Peer Group 2 to Peer Group 3.



Gift Receipts by Purpose

CURRENT PROGRAMS			CAPITAL PURPOSES				IRREVOCABLE DEFERRED GIFTS	
GROUP I	Unrestricted	Restricted	Campus Improvements: Property, Buildings and Equipment	Endowment: Unrestricted	Endowment: Restricted	Loan Funds	Present Value	Gift Receipts Total
Bakersfield	\$90,957	\$3,382,978	\$0	\$0	\$457,334	\$0	\$0	\$3,931,269
Channel Islands	\$465,935	\$1,760,705	\$201,000	\$0	\$215,668	\$0	\$0	\$2,643,308
Dominguez Hills	\$159,358	\$3,433,070	\$3,010,141	\$1,000	\$32,480	\$0	\$268,564	\$6,904,613
East Bay	\$48,061	\$1,310,090	\$0	\$9,101	\$435,151	\$0	\$0	\$1,802,403
Humboldt	\$210,602	\$3,379,250	\$31,000	\$1,000	\$1,065,289	\$0	\$43,638	\$4,730,779
Los Angeles	\$311,117	\$8,606,738	\$1,504,428	\$0	\$6,787,037	\$0	\$18,207	\$17,227,527
Maritime Academy	\$1,386,307	\$387,402	\$75,000	\$0	\$307,259	\$0	\$0	\$2,155,968
Monterey Bay	\$73,097	\$4,746,657	\$6,000	\$0	\$1,026,402	\$0	\$0	\$5,852,156
San Bernardino	\$29,642	\$3,883,772	\$72,903	\$0	\$11,695,571	\$0	\$0	\$15,681,888
San Marcos	\$81,769	\$3,339,127	\$330	\$0	\$176,625	\$0	\$0	\$3,597,851
Stanislaus	\$33,678	\$2,016,727	\$4,995	\$0	\$117,808	\$0	\$501,336	\$2,674,544
	\$2,890,523	\$36,246,516	\$4,905,797	\$11,101	\$22,316,624	\$0	\$831,745	\$67,202,306
GROUP II								
Chico	\$357,864	\$4,698,261	\$475,834	\$21,949	\$2,185,239	\$500	\$0	\$7,739,647
Pomona	\$110,040	\$5,973,968	\$269,095	\$0	\$209,657	\$0	\$0	\$6,562,760
Sacramento	\$143,979	\$11,293,928	\$285,922	\$0	\$4,429,151	\$0	\$40,580	\$16,193,560
Sonoma	\$28,715	\$3,683,765	\$661,335	\$0	\$167,014	\$0	\$1,776,730	\$6,317,559
	\$640,598	\$25,649,922	\$1,692,186	\$21,949	\$6,991,061	\$500	\$1,817,310	\$36,813,526
GROUP III								
Fresno	\$5,190	\$11,494,211	\$865,242	\$75	\$1,922,313	\$0	\$0	\$14,287,031
Fullerton	\$1,745,664	\$10,995,915	\$184,432	\$60,000	\$4,890,055	\$0	\$2,606	\$17,878,672
Long Beach	\$629,946	\$13,464,325	\$2,535,352	\$0	\$7,043,475	\$0	\$15,673	\$23,688,771
Northridge	\$88,304	\$8,907,654	\$636,675	\$0	\$4,501,136	\$0	\$666,129	\$14,799,898
San Diego	\$43,216	\$52,807,964	\$3,232,618	\$0	\$19,220,992	\$0	\$10,150,604	\$85,455,394
San Francisco	\$357,109	\$9,063,643	\$152,175	\$292,300	\$4,973,834	\$0	\$31,880	\$14,870,941
San José	\$504,344	\$14,162,751	\$8,905	\$1,264,850	\$5,186,151	\$0	\$406,329	\$21,533,330
San Luis Obispo	\$228,883	\$16,202,810	\$15,093,178	\$0	\$6,750,781	\$0	\$33,058	\$38,308,710
	\$3,602,656	\$137,099,273	\$22,708,577	\$1,617,225	\$54,488,737	\$0	\$11,306,279	\$230,822,747
Chancellor's Office	\$161,010	\$1,525,456	\$0	\$0	\$2,574,175	\$0	\$0	\$4,260,641
GRAND TOTAL	\$7,294,787	\$200,521,167	\$29,306,560	\$1,650,275	\$86,370,597	\$500	\$13,955,334	\$339,099,220

Note 1: In 2016/2017, Fullerton, Northridge and San Francisco moved from Peer Group 2 to Peer Group 3.

Planned Giving

IRREVOCABLE DEFERRED GIFTS

GROUP I	Face Value	Present Value
Bakersfield	\$0	\$0
Channel Islands	\$0	\$0
Dominguez Hills	\$350,000	\$268,564
East Bay	\$0	\$0
Humboldt	\$103,993	\$43,638
Los Angeles	\$50,000	\$18,207
Maritime Academy	\$0	\$0
Monterey Bay	\$0	\$0
San Bernardino	\$0	\$0
San Marcos	\$0	\$0
Stanislaus	\$1,226,695	\$501,336
	\$1,730,688	\$831,745

GROUP II

Chico	\$0	\$0
Pomona	\$0	\$0
Sacramento	\$50,000	\$40,580
Sonoma	\$2,565,333	\$1,776,730
	\$2,615,333	\$1,817,310

GROUP III

Fresno	\$0	\$0
Fullerton	\$5,000	\$2,606
Long Beach	\$30,000	\$15,673
Northridge	\$840,280	\$666,129
San Diego	\$13,540,660	\$10,150,604
San Francisco	\$60,000	\$31,880
San José	\$731,853	\$406,329
San Luis Obispo	\$90,854	\$33,058
	\$15,298,647	\$11,306,279

Chancellor's Office	\$0	\$0
---------------------	-----	-----

GRAND TOTAL **\$19,644,668** **\$13,955,334** **\$138,143,252** **\$69,652,279**

REVOCABLE DEFERRED GIFTS

Face Value	Present Value
\$475,000	\$475,000
\$1,000	\$740
\$5,000	\$5,000
\$620,000	\$488,071
\$0	\$0
\$810,001	\$502,517
\$0	\$0
\$1,100,000	\$765,795
\$2,377,098	\$1,617,168
\$4,020,003	\$2,827,838
\$0	\$0
\$9,408,102	\$6,682,129

\$3,685,000	\$2,471,686
\$6,274,419	\$3,857,850
\$7,375,000	\$4,828,232
\$1,082,200	\$799,623
\$18,416,619	\$11,957,391

\$3,233,129	\$1,855,182
\$3,648,600	\$2,625,567
\$8,443,000	\$5,749,678
\$4,148,007	\$3,029,741
\$6,985,944	\$5,239,458
\$1,375,001	\$1,122,690
\$3,450,000	\$2,261,050
\$79,034,850	\$29,129,393
\$110,318,531	\$51,012,759

\$0	\$0
-----	-----



The Humboldt State University Advancement Foundation completed its first successful fundraising campaign, raising \$100,000 for its new *Go Green Fund*, including a \$20,000 matched gift from a foundation board member. The *Go Green Fund* will help support a variety of green campus initiatives across the university.

Note 1: In 2016/2017, Fullerton, Northridge and San Francisco moved from Peer Group 2 to Peer Group 3.



Endowment

GROUP I	2014/2015 Market Value	2015/2016 Market Value	2016/2017 Market Value	Amount	Percentage	2016/2017 Investment Return Rate	Three Year Average	Five Year Average	Ten Year Average	2016/2017 Gifts to Endowment	2016/2017 Endowment Distribution
Bakersfield	\$23,391,570	\$21,629,109	\$23,939,540	\$2,310,431	10.68%	7.47%	0.63%	6.15%	4.79%	\$457,334	\$704,058
Channel Islands	\$13,102,442	\$12,831,165	\$15,136,855	\$2,305,690	17.97%	10.20%	3.27%	7.86%	5.41%	\$215,668	\$405,774
Dominguez Hills	\$10,117,030	\$9,008,988	\$9,942,739	\$933,751	10.36%	12.74%	3.37%	7.61%	5.72%	\$33,480	\$323,911
East Bay	\$16,775,508	\$17,042,982	\$16,173,108	-\$869,874	-5.10%	13.87%	4.15%	8.03%	5.05%	\$444,252	\$513,222
Humboldt	\$27,963,858	\$27,068,353	\$30,085,888	\$3,017,535	11.15%	13.95%	5.22%	8.32%	5.19%	\$1,066,289	\$1,170,994
Los Angeles	\$29,737,805	\$29,211,280	\$38,770,108	\$9,558,828	32.72%	11.00%	3.38%	6.97%	4.57%	\$6,787,037	\$812,590
Maritime Academy	\$6,768,434	\$7,113,900	\$8,152,623	\$1,038,723	14.60%	9.10%	1.73%	5.35%	3.92%	\$307,259	\$34,724
Monterey Bay	\$18,648,419	\$20,217,273	\$22,839,354	\$2,622,081	12.97%	12.30%	3.77%	8.14%	6.55%	\$1,026,402	\$876,522
San Bernardino	\$24,508,041	\$23,297,671	\$37,701,776	\$14,404,105	61.83%	12.70%	3.43%	7.50%	4.55%	\$11,695,571	\$794,455
San Marcos	\$23,175,656	\$22,009,178	\$24,096,974	\$2,087,796	9.49%	14.80%	3.27%	8.26%	5.03%	\$176,625	\$881,362
Stanislaus	\$12,677,309	\$11,638,407	\$13,538,063	\$1,899,656	16.32%	9.76%	0.75%	4.56%	-0.41%	\$117,808	\$188,774
	\$206,866,072	\$201,068,306	\$240,377,028	\$39,308,722	19.55%	11.63%	3.00%	7.16%	4.58%	\$22,327,725	\$6,706,386
GROUP II											
Chico	\$54,844,630	\$53,938,221	\$60,995,401	\$7,057,180	13.08%	11.20%	4.60%	7.86%	4.58%	\$2,207,188	\$2,053,492
Pomona	\$90,234,110	\$85,625,536	\$96,139,499	\$10,513,963	12.28%	13.64%	2.33%	6.75%	5.19%	\$209,657	\$962,823
Sacramento	\$34,968,809	\$39,567,580	\$45,580,684	\$6,013,104	15.20%	8.45%	2.78%	5.68%	3.39%	\$4,429,151	\$1,128,566
Sonoma	\$44,592,099	\$44,019,577	\$47,076,962	\$3,057,385	6.95%	10.90%	2.40%	5.78%	2.86%	\$167,014	\$1,414,719
	\$224,639,648	\$223,150,914	\$249,792,546	\$26,641,632	11.94%	11.05%	3.03%	6.52%	4.00%	\$7,013,010	\$5,559,600
GROUP III											
Fresno	\$165,962,047	\$146,328,328	\$154,415,469	\$8,087,141	5.53%	10.10%	3.18%	6.50%	4.18%	\$1,922,388	\$6,936,718
Fullerton	\$51,948,221	\$53,113,305	\$61,233,989	\$8,120,684	15.29%	9.06%	3.19%	6.13%	4.33%	\$4,950,055	\$1,547,913
Long Beach	\$57,190,877	\$56,442,378	\$66,613,450	\$10,171,072	18.02%	11.33%	3.73%	4.30%	4.56%	\$7,043,475	\$2,558,677
Northridge	\$89,788,611	\$91,653,083	\$102,610,732	\$10,957,649	11.96%	11.85%	3.56%	7.52%	4.36%	\$4,501,136	\$2,834,232
San Diego	\$209,372,000	\$219,994,000	\$261,544,000	\$41,550,000	18.89%	14.10%	4.06%	8.29%	5.55%	\$19,220,992	\$7,657,000
San Francisco	\$67,653,589	\$72,206,679	\$83,743,511	\$11,536,832	15.98%	10.50%	4.50%	7.54%	4.33%	\$5,266,134	\$1,716,097
San José	\$120,044,974	\$125,627,217	\$142,939,567	\$17,312,350	13.78%	13.30%	3.97%	7.83%	4.21%	\$6,451,001	\$4,569,588
San Luis Obispo	\$194,710,044	\$190,331,212	\$209,754,181	\$19,422,969	10.20%	12.60%	3.60%	7.44%	5.11%	\$6,750,781	\$7,727,764
	\$956,670,363	\$955,696,202	\$1,082,854,899	\$127,158,697	13.31%	11.61%	3.72%	7.34%	4.61%	\$56,105,962	\$35,547,989
Chancellor's Office	\$19,827,879	\$19,183,856	\$23,614,906	\$4,431,050	23.10%	12.73%	3.48%	7.12%	5.38%	\$2,574,175	\$704,196
GRAND TOTAL	\$1,408,003,962	\$1,399,099,278	\$1,596,639,379	\$197,540,101	14.12%	11.57%	3.26%	7.11%	4.53%	\$88,020,872	\$48,518,171

Note 1: Investment returns are reported as net of investment fees.

Note 2: Peer Group and Systemwide investment returns are presented as equal-weighted averages.

Note 3: In 2016/2017, Fullerton, Northridge and San Francisco moved from Peer Group 2 to Peer Group 3.

Note 4: Fresno 2014/2015 to 2015/2016 change in market value includes donor-directed distribution of \$13 million for facility construction.

Note 5: East Bay 2015/2016 to 2016/2017 change in market value due to liquidation of term endowment for capital renovations.



Alumni

GROUP I	Number of Addressable Alumni	Alumni Solicited	Alumni Donors	Total Alumni Contributions	Alumni Participation Rate
Bakersfield	48,894	1,428	288	\$108,619	0.59%
Channel Islands	14,279	13,975	432	\$49,676	3.03%
Dominguez Hills	81,643	75,610	1,237	\$183,648	1.52%
East Bay	113,123	14,164	880	\$450,896	0.78%
Humboldt	54,523	33,778	2,680	\$1,617,877	4.92%
Los Angeles	149,362	149,362	2,997	\$601,867	2.01%
Maritime Academy	4,878	4,135	300	\$326,898	6.15%
Monterey Bay	14,863	14,496	235	\$31,163	1.58%
San Bernardino	80,336	42,480	1,830	\$235,663	2.28%
San Marcos	38,841	10,149	447	\$57,376	1.15%
Stanislaus	58,321	47,746	766	\$186,016	1.31%
	659,063	407,323	12,092	\$3,849,699	1.83%
GROUP II					
Chico	155,578	22,359	6,052	\$1,721,610	3.89%
Pomona	127,606	91,825	3,140	\$2,179,458	2.46%
Sacramento	228,440	129,379	6,128	\$2,141,192	2.68%
Sonoma	59,717	38,466	480	\$758,421	0.80%
	571,341	282,029	15,800	\$6,800,681	2.77%
GROUP III					
Fresno	193,762	152,547	4,858	\$3,755,650	2.51%
Fullerton	263,737	247,477	6,891	\$1,634,677	2.61%
Long Beach	300,717	170,711	8,251	\$5,438,709	2.74%
Northridge	341,836	249,276	10,900	\$4,863,452	3.19%
San Diego	417,675	150,449	24,573	\$31,480,716	5.88%
San Francisco	303,430	51,561	2,156	\$3,740,907	0.71%
San José	244,320	199,262	4,167	\$5,908,672	1.71%
San Luis Obispo	183,405	70,678	5,930	\$13,732,817	3.23%
	2,248,882	1,291,961	67,726	\$70,555,600	3.01%
GRAND TOTAL	3,479,286	1,981,313	95,618	\$81,205,980	2.75%

Note 1: Alumni Participation Rate equals Alumni Donors divided by Number of Addressable Alumni.

Note 2: In 2016/2017, Fullerton, Northridge and San Francisco moved from Peer Group 2 to Peer Group 3.



Sonoma State

“It is a priority for Sonoma State to recruit and support first-generation college students, particularly those from our local region.”

— Judy K. Sakaki, Sonoma State



DEFINITION OF TERMS

Charitable Gift Commitments

The data represents current year performance in developing philanthropic support for the institution. In addition to recognizing new gifts generated to support the institution, this measure acknowledges the important work achieved in securing ongoing commitments through multi-year pledges and support promised through testamentary provisions in wills, trusts, and beneficiary designations. Revocable deferred gifts are not capitalized on the university's financial statements. These numbers will not reconcile to the annual audited financial statements that use accounting standards.

Charitable Gift Receipts

Charitable gift receipts, also known as voluntary support, represents all gift income received in the form of cash, securities, in-kind contributions, irrevocable future commitments and private charitable grants. For the purposes of this report, gifts are counted at present value. These national gift reporting standards are defined by the Council for Advancement and Support of Education and the National Association of College and University Business Officers. The Council for Aid to Education utilizes these standards in the annual Voluntary Support of Education survey. These numbers will not reconcile to the annual audited financial statements that use accounting standards.

Endowment Market Value

The endowment market value includes assets held by both the university and its auxiliaries in all of the following categories:

True endowment

Funds provided to the institution, the principal of which is not expendable by the institution under the terms of the agreement that created the fund.

Term endowment

Similar to true endowment except that all or part of the funds may be expended after a stated period or upon the occurrence of a certain event as stated in the terms governing the funds.

Quasi-endowment

Funds functioning as endowment such as surplus funds that have been added to the endowment fund, the principal of which may be spent at the discretion of the governing board.

Group I

Universities categorized within Group I generally have less than 5,000 individual donors, less than 10 full-time professional fundraisers, and less than \$25 million in endowment market value. These advancement programs are building infrastructure and are striving toward raising gift commitments that are equivalent to 10 percent of the campus state budget.

Group II

Universities categorized within Group II generally have between 5,000 and 10,000 individual donors, between 10 and 20 full-time professional fundraisers, and between \$25 million and \$50 million in endowment market value. These advancement programs are maturing and are expected to raise gift commitments that are equivalent to 10 percent to 15 percent of the campus state budget.

Group III

Universities categorized within Group III generally have over 10,000 individual donors, over 20 full-time professional fundraisers, and over \$50 million in endowment market value. These more mature advancement programs have developed successful annual fund, major gift and planned giving operations complemented by strong alumni and communication programs. These programs are expected to raise gift commitments that are greater than 15 percent of the campus state budget.



Pledges

Gift commitments paid in installments over a period of time, not to exceed five years. Pledges must be documented and are counted at face value.

Purpose of Gift

Refers to the donor's expressed intention for the use of the gift.

Unrestricted

Gifts given to the institution without any restriction, regardless of any subsequent designation by the institution.

Restricted

Gifts that have been restricted to support academic divisions, athletics, faculty compensation, research, public service, library operations, physical plant maintenance, student financial aid, or other restricted purposes.

Property, Buildings, and Equipment (Campus Improvement)

Funds functioning as endowment such as surplus funds that have been added to the endowment fund, the principal of which may be spent at the discretion of the governing board.

- Outright gifts of real and personal property for the use of the institution;
- Gifts made for the purpose of purchasing buildings, other facilities, equipment, and land for the institution;
- Gifts restricted for construction or major renovation of buildings and other facilities; and
- Gifts made for retirement of indebtedness.

Endowment

Funds to be retained and invested for income-producing purposes.

Loan Funds

Outright gifts restricted by donors to be available for loans to students, faculty and staff.

Irrevocable Deferred Gifts

Irrevocable commitments such as charitable gift annuities, charitable remainder trusts (including those administered outside the institution), gifts to pooled income funds, and remainder interests in property. These provisions are counted at market value.

Revocable Deferred Gifts

This category includes new estate provisions made in a will, revocable trust or beneficiary designation for which the institution has documentation. These provisions are counted at face value.

Source of Gift

Sources of gifts are defined as those entities (individuals or organizations) that transmit the gift or grant to the institution.

Alumni

Former undergraduate or graduate students who have earned some credit toward one of the degrees, certificates or diplomas offered by the institution for whom the university has a reasonable means of contacting. It is within the discretion of each university to limit alumni status to individuals who have obtained a degree and/or credential.

Parents

These are individuals, other than alumni, who are the parents, guardians or grandparents of current or former students at the institution.

Other Individuals

This includes all other persons, including governing board members, who are not classified as either alumni or parent.

Foundations

Personal/family foundations and other foundations and trusts that are private tax-exempt entities operated exclusively for charitable purposes. It does not include company-sponsored foundations.

Corporations

This category includes corporations, businesses, partnerships, and cooperatives that have been organized for profit-making purposes, including corporations owned by individuals and families and other closely held companies. This category also includes company-sponsored foundations as well as industry trade associations.

Other Organizations

Organizations not reported elsewhere, including religious and community organizations, fundraising consortia, and any other nongovernmental agencies.

The Chico State Department of Civil Engineering received a \$1 million pledge from Dennis Murphy to create the *Hayden Homes–Dennis P. Murphy Endowed Professorship*, and an additional \$40,000 gift to support the current chair.

Give Now

Donate directly to a CSU campus
or to the CSU Foundation at

www.calstate.edu/give

HUMBOLDT

CHICO

SACRAMENTO

SONOMA

MARITIME

SAN FRANCISCO

EAST BAY

STANISLAUS

SAN JOSÉ

FRESNO

MONTEREY BAY

SAN LUIS OBISPO

BAKERSFIELD

NORTHRIDGE

SAN BERNARDINO

POMONA

FULLERTON

CHANNEL ISLANDS

LOS ANGELES

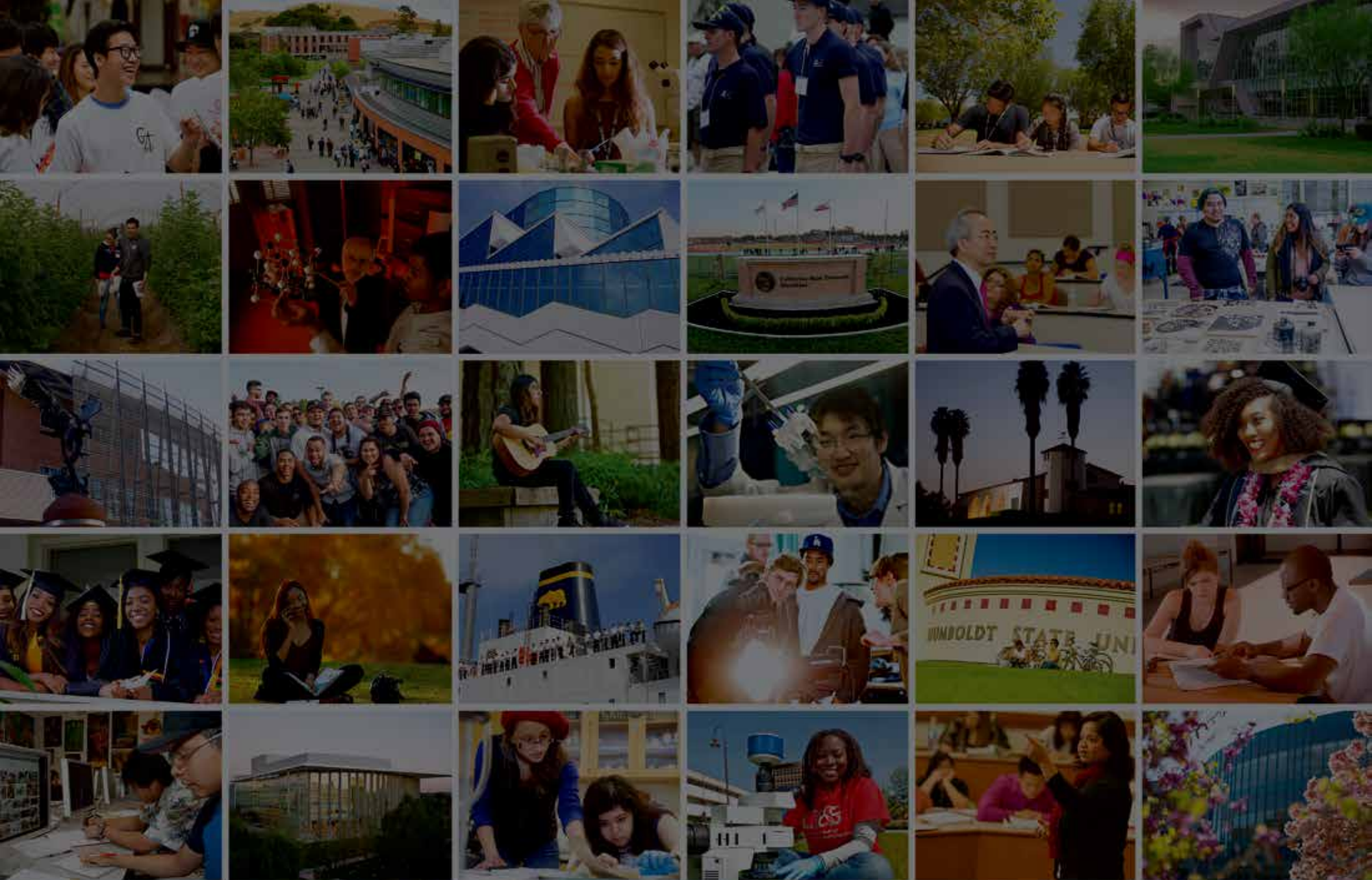
DOMINGUEZ HILLS

LONG BEACH

SAN MARCOS

SAN DIEGO





CSU The California State University

401 Golden Shore, Long Beach, CA 90802-4210
calstate.edu

Follow us on social media!

f t / @calstate
i / @thecsua