



CalPoly
Pomona



Student Wellbeing: A Holistic Approach to Care

January 7, 2020

Judy Juarez Crawford (she, her, hers)

Broncos Care Basic Needs Program, Care Services Coordinator

Ramon Coronado, LCSW, MPA (he, him, his)

Behavioral Intervention Team, Care Services Coordinator

Lead, Integrated Care Network

Leticia Gutierrez- Lopez, Psy.D. (she, her, hers)

Associate Vice President, Student Health and Wellbeing

Overview



Introduction



Integrated Care Network Overview



Basic Needs Services



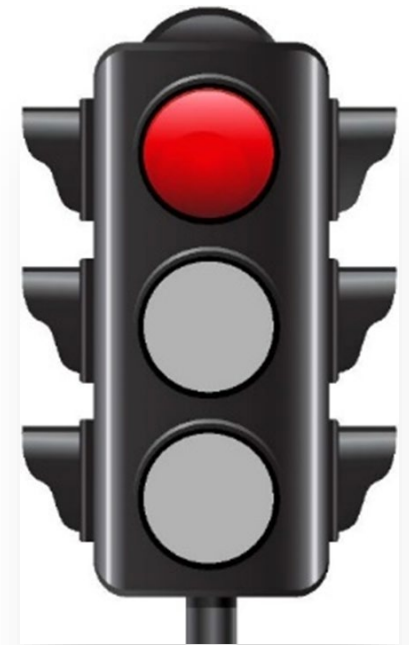
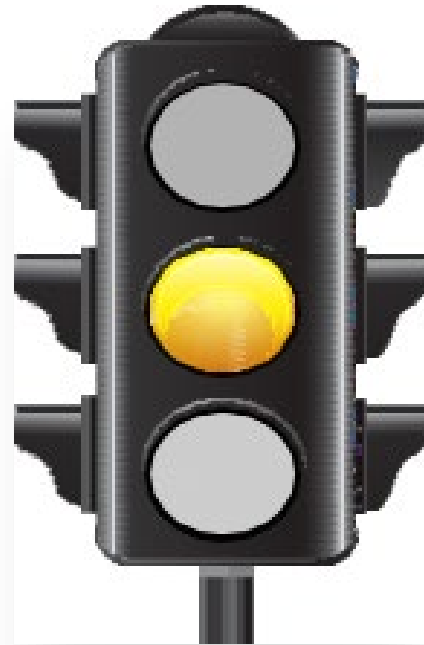
Case Study

Integrated Care Network



Goal: Integrate and partner to improve access through coordinated care.

- Autism Specialty
- ADHD Specialty
- ASI Care Coordinator
- Broncos Care – Basic Needs
- Behavioral Intervention Team
- University Housing Case Management and Linkage
- Wellbeing Coaching



Warm Handoff

Cal Poly Pomona Basic Needs Initiative:



Broncos Care Basic Needs Program

- ✓ Division of Student Affairs
- ✓ Care Services Coordinator
- ✓ Student CalFresh Outreach Ambassadors



Basic Needs Task Force

- ✓ Staff
- ✓ Faculty
- ✓ Student representatives
- ✓ ASI



Associated Students, Inc.

- ✓ Poly Pantry
- ✓ ASI Care Coordinator
- ✓ Officer of Basic Needs

Food and Housing Resources:

Food Resources



- Poly Pantry (located in the BSC)
- CalFresh Outreach & Assistance
- Meal Assistance Program
- EBT Access on Campus

Housing Resources



- Emergency Housing through University Housing Services (7-14 days)
- Hotel Vouchers for students with families (7-14 days)
- Linkage to community resources



Financial Assistance and Support

- \$500 Emergency Grant for crisis/emergencies
- Linkage with Financial Aid and other campus resources
- Education on financial resources and building budgets

Holistic Support



- Follow academic achievement of students and focus on supporting them through a holistic wraparound approach
- Full time Care Services Coordinator to assist with support and linkage to campus and community resources;

Case Study: A Holistic Approach



Receive
application
and/or
referral



Review
application:
Assess level
of need



Initial
Meeting
with
student



Warm
handoff to
ICN &
beyond



Provide
resources



Track
Student
Success &
Follow up
accordingly



THANK YOU!



Using Analytics to Increase CalFresh Enrollment

CHEBNA Summit 2020

Darice Ingram

Rutweek Sawant

**CAL STATE
EAST BAY**

Today's Review



Background

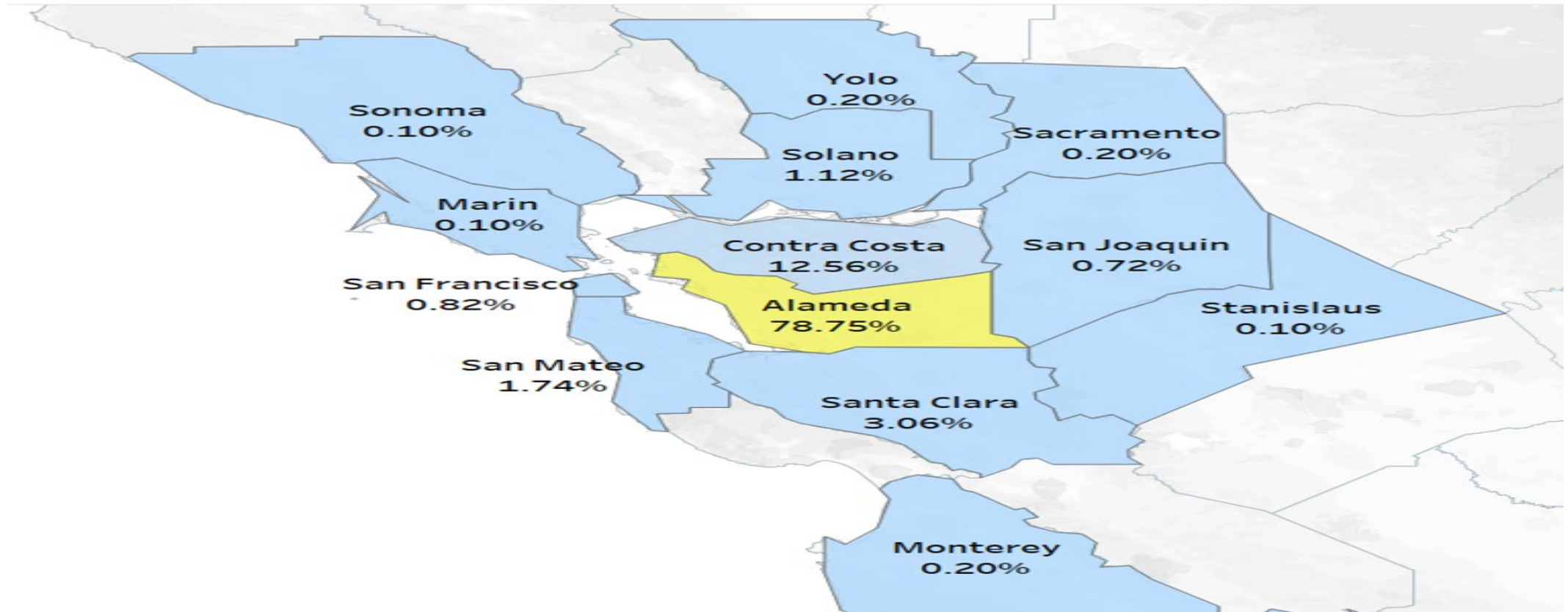


Data Highlights

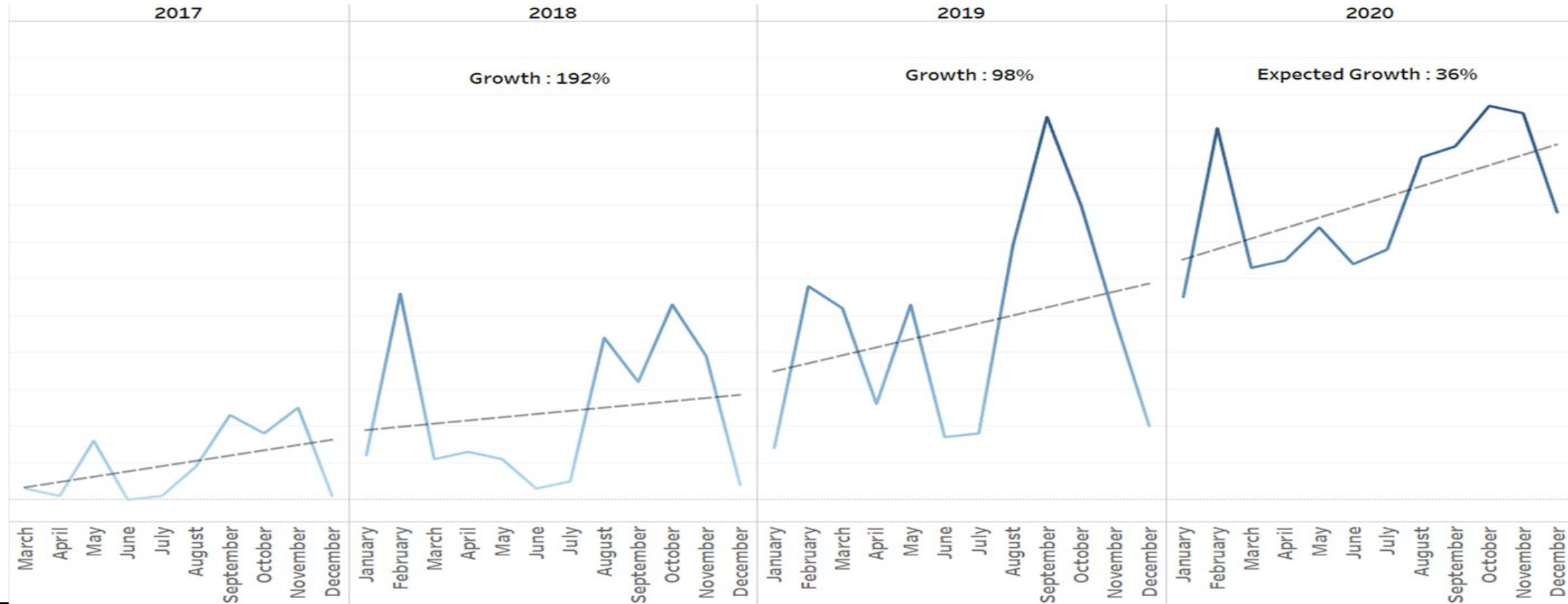


**Impact and
H.O.P.E.**

Multiple Service Areas

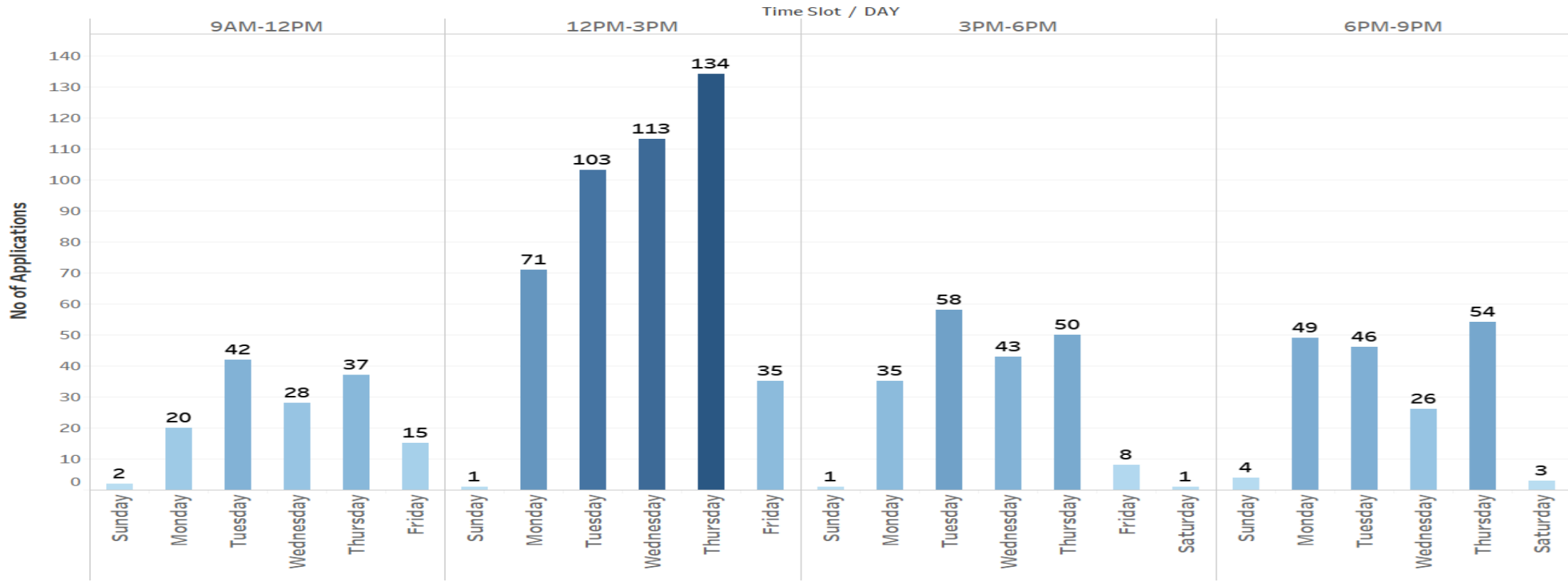


Growth and Trends

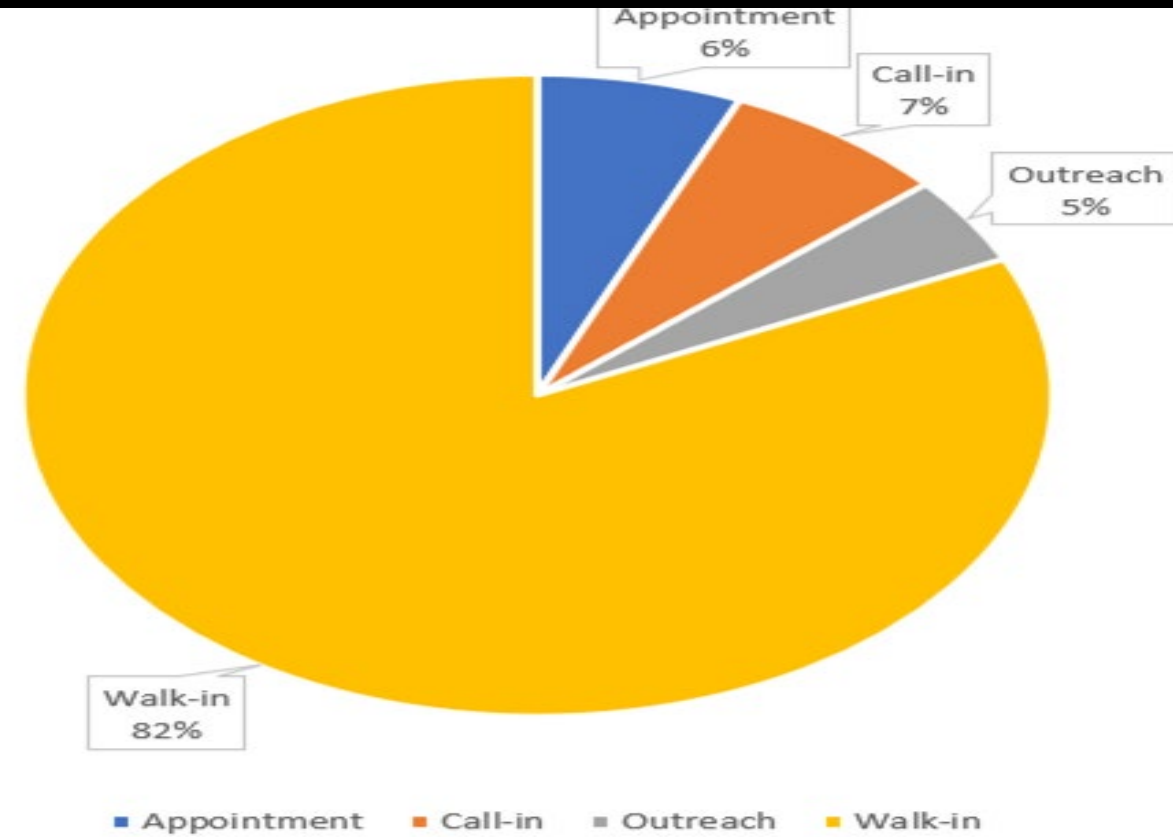
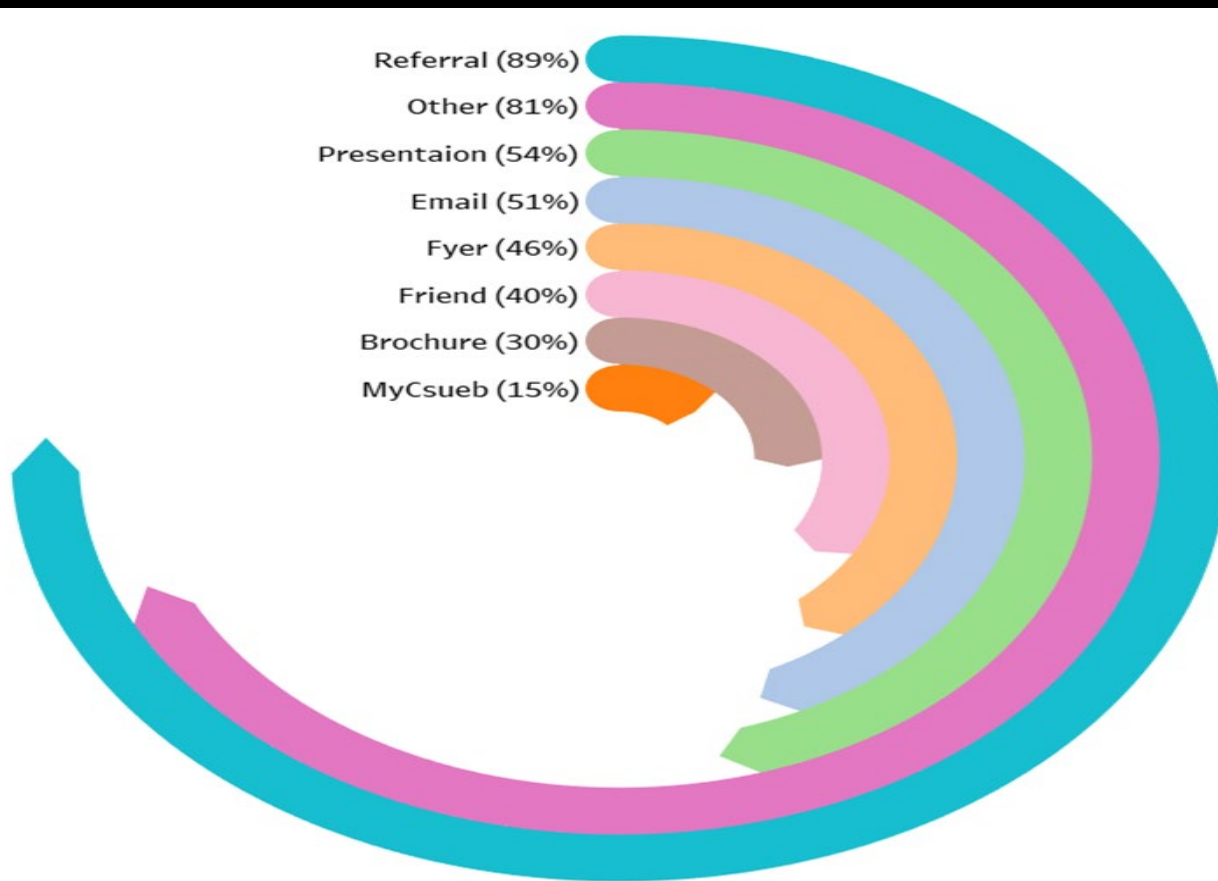


When and Where

Time VS Day



How and Why



Our Response



<https://preview.tinyurl.com/csuebnbccalfresh>

CAL STATE
EAST BAY Rising in the East



Thank You & Questions



"Will CalFresh affect my financial aid? "
NO. It will not.



This presentation was funded by USDA, SNAP, known in California as CalFresh, an equal opportunity provider and employer, and the California Department of Social Services. Contact the East Bay CalFresh office

Connect with Us

Darice Ingram
Basic Needs Program Coordinator
Darice.Ingram@csueastbay.edu

Rutweek Sawant
M.S. Business Analytics Intern
Rutweekmahesh.sawant@csueastbay.edu

calfresh@csueastbay.edu
@pioneersforhope