

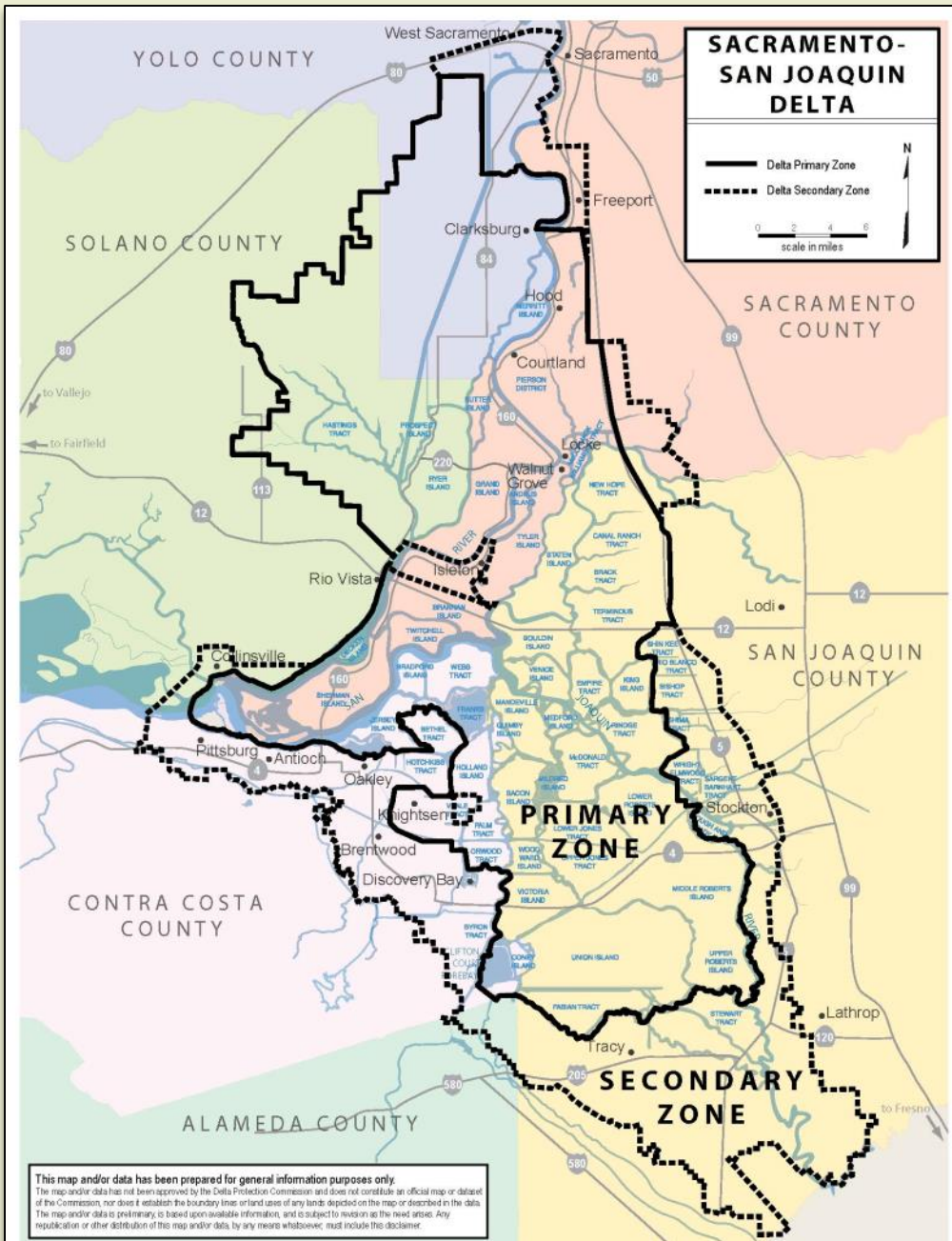


Protecting the Delta as Place
WRPI Annual Conference | April 28, 2016

Presentation Outline

- Introduction to “Delta as Place”
- Proposed Delta National Heritage Area
- Delta Heritage Area Initiative (DelHAI)
- Concerns over Twin Tunnels project

Sacramento
San
Joaquin
Delta



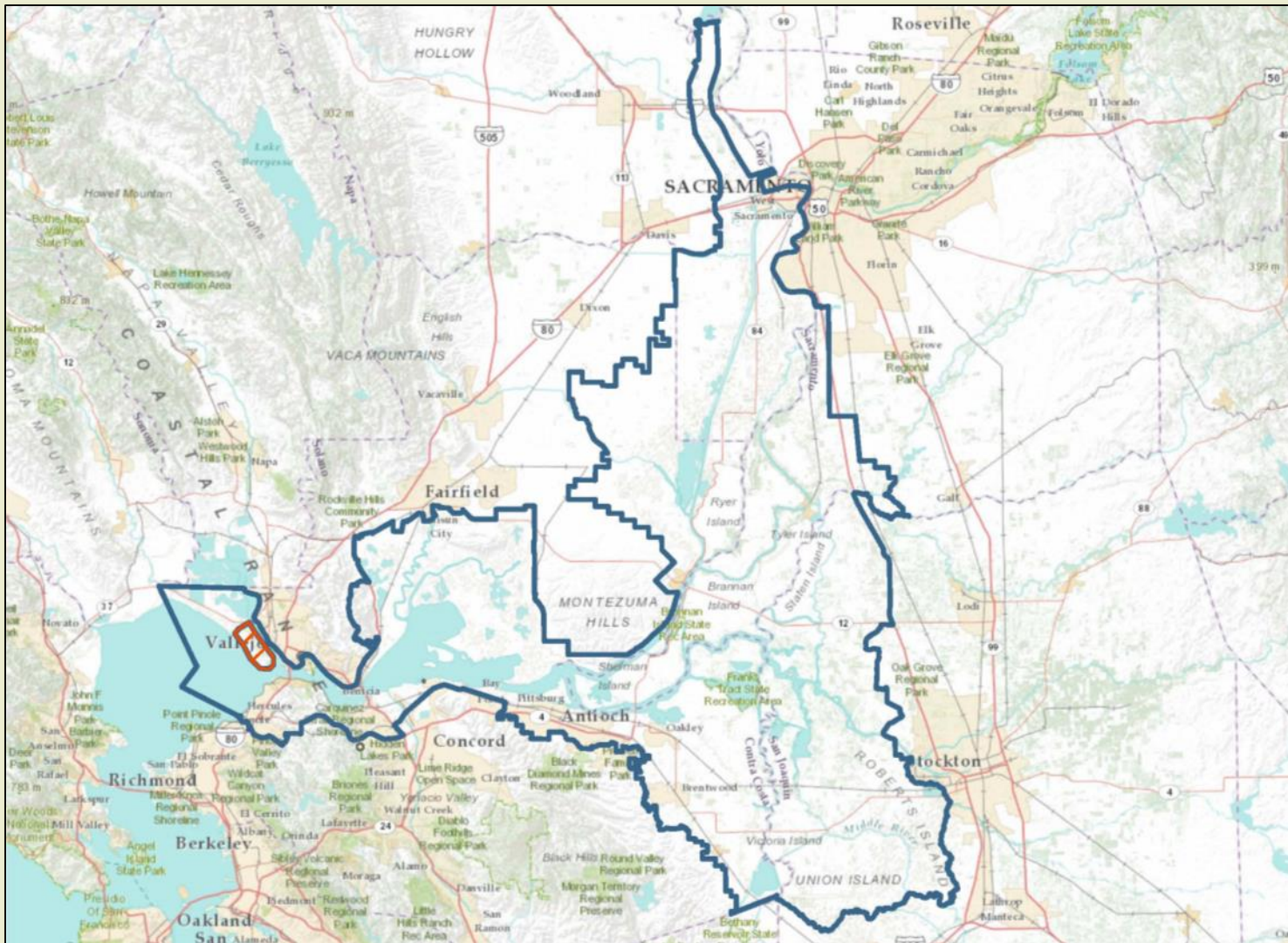
Delta as Place

“Coequal goals” means the two goals of providing a more reliable water supply for California and protecting, restoring, and enhancing the Delta ecosystem. The coequal goals shall be achieved in a manner that ***protects and enhances the unique cultural, recreational, natural resource, and agricultural values of the Delta as an evolving place.***

- California Water Code § 85054



Proposed National Heritage Area



Delta National Heritage Area Conceptual Boundaries

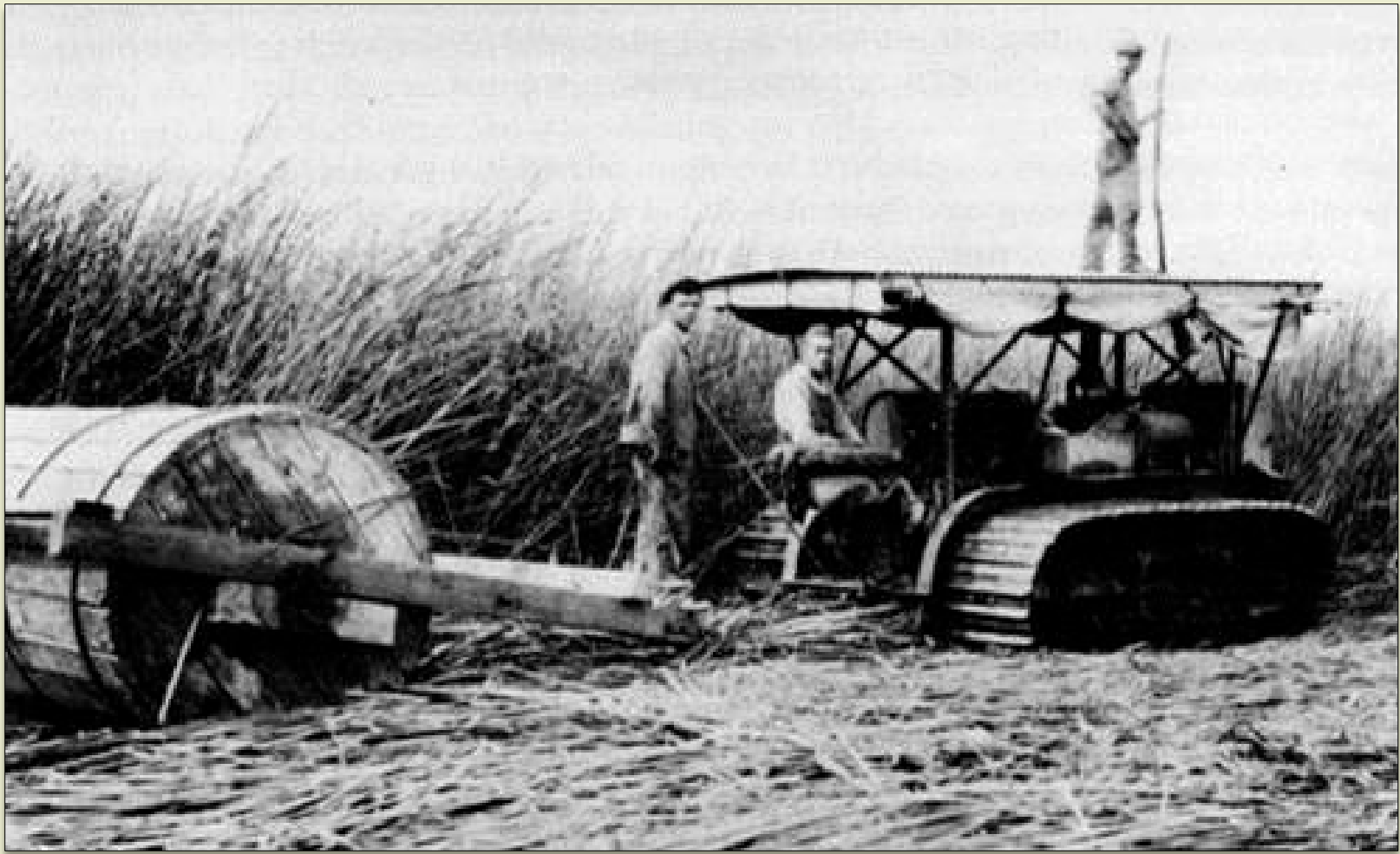




Theme 1

At the Heart of California lies America's inland Delta.





Theme 2

Conversion of the Delta from marshland to farmland was one of the largest reclamation projects in the United States.





Theme 3

Multi-cultural contributions and experiences have shaped the Delta's rural landscape.





Theme 4

The Delta, California's Cornucopia, is amongst the most fertile agricultural regions in the world.





Theme 5

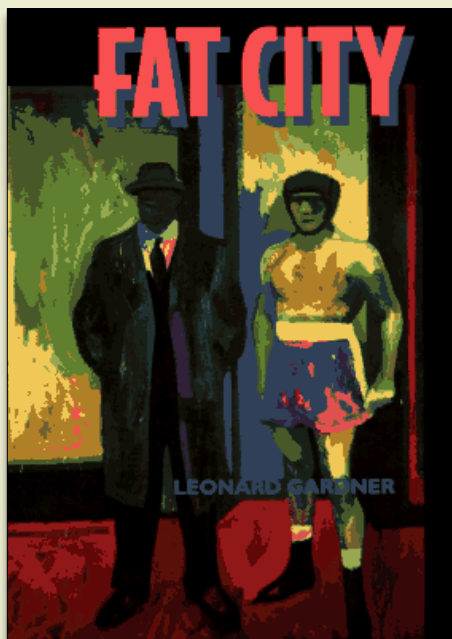
The Delta lies at the center of California's water resource challenges.

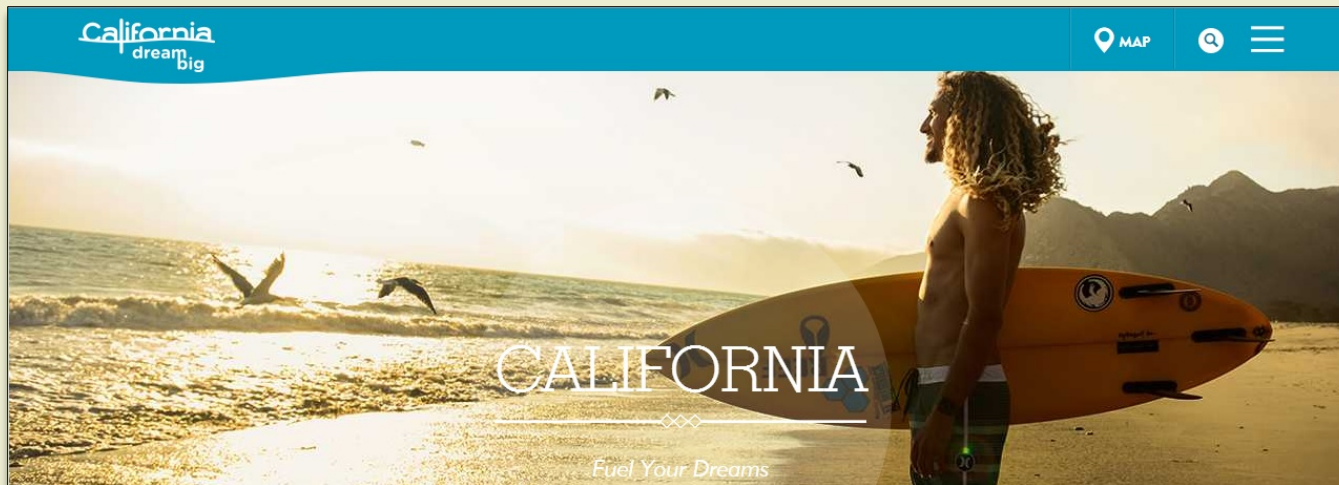




Delta Heritage Area Initiative (DelHAI)

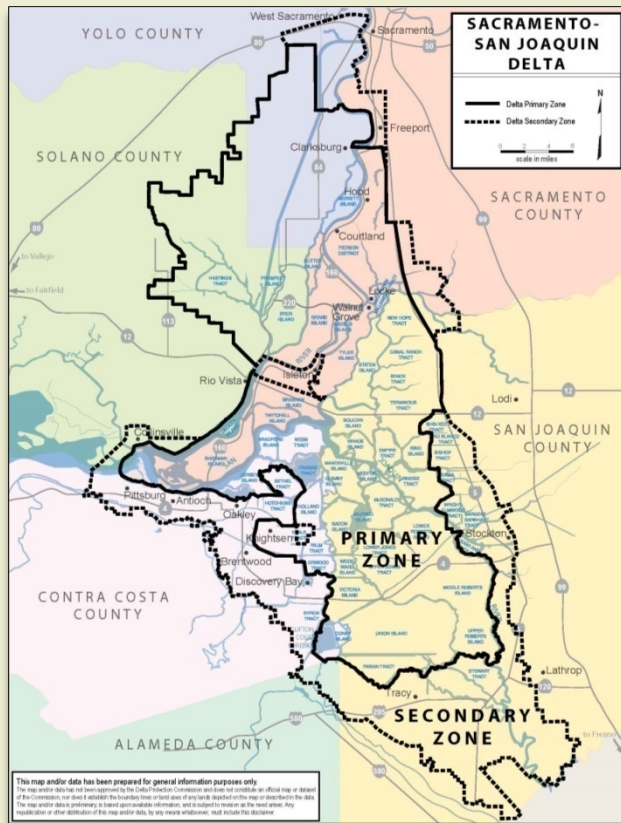
A R T S & M A K E R S





Awareness Campaign





Planning & Design

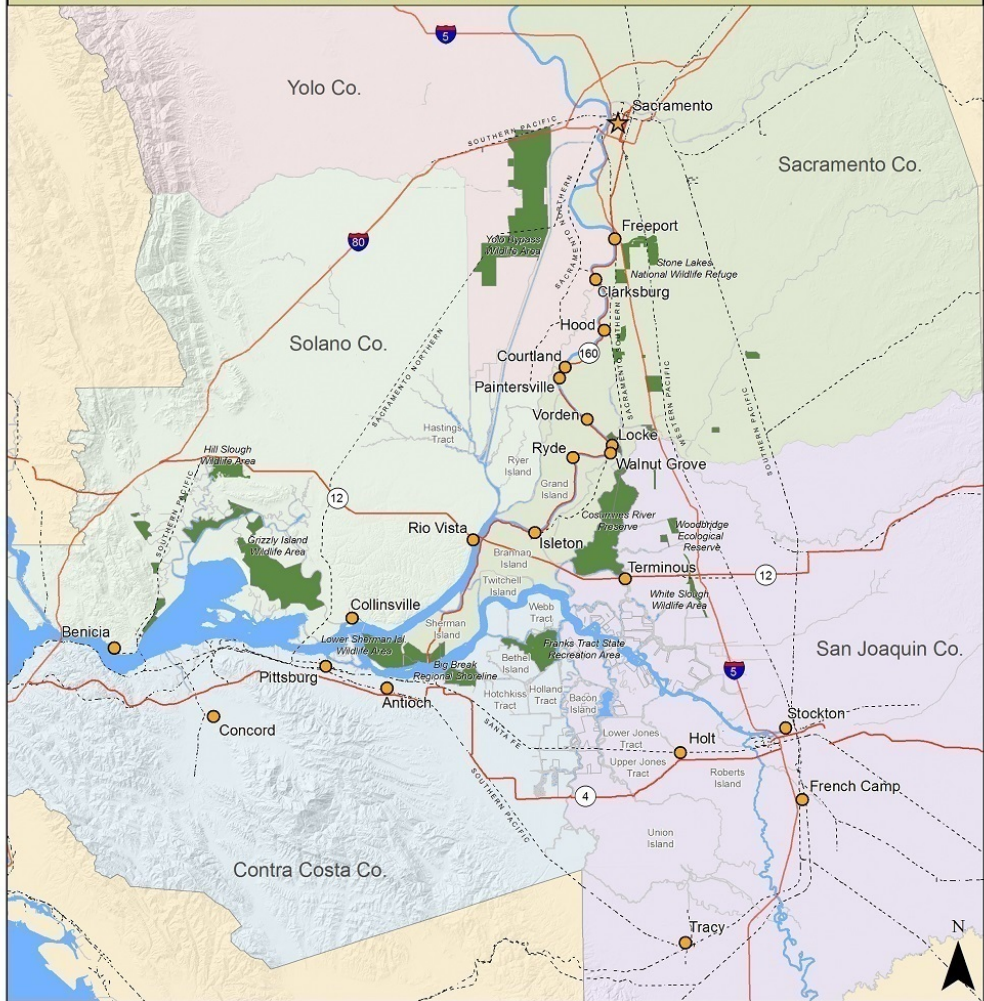




Preservation



The Delta as a Cultural and Historical District



- Cities and Towns
- Roads
- Railroads
- Waterways
- Protected Areas

Prepared for the Delta Narratives Project.
 Sources: Counties, Highways, Railroads, and Cities downloaded from the State of California Geoportal (www.atlas.ca.gov/download.html); protected areas downloaded from California Protected Areas Database (www.calands.org); water data downloaded from CA Dept. of Water Resources, California Water Plan (www.waterplan.water.ca.gov/maps/). Spatial Reference: NAD83 UTM Zone 10N.

Education and Research



Education and Research



Concerns Over Twin Tunnels

- Effects of long-term construction activity on agriculture, culture, and recreation
- Permanent loss of agricultural land and buildings
- Decreased water quality for in-Delta agricultural and urban use

Concerns Over Twin Tunnels

The policy of the State of California is to reduce reliance on the Delta in meeting California's future water supply needs through a statewide strategy of investing in improved regional supplies, conservation, and water use efficiency...

- *California Water Code § 85021*

Concerns Over Twin Tunnels

...Each region that depends on water from the Delta watershed shall improve its regional self-reliance for water through investment in water use efficiency, water recycling, advanced water technologies, local and regional water supply projects, and improved regional coordination of local and regional water supply efforts.

- *California Water Code § 85021*



Delta Protection Commission
Committed to the Protection and Health of the Delta.

